



Ecology and Distribution of a Disjunct Population of *Lewisia leeana* (Montiaceae), Eastern Fresno County

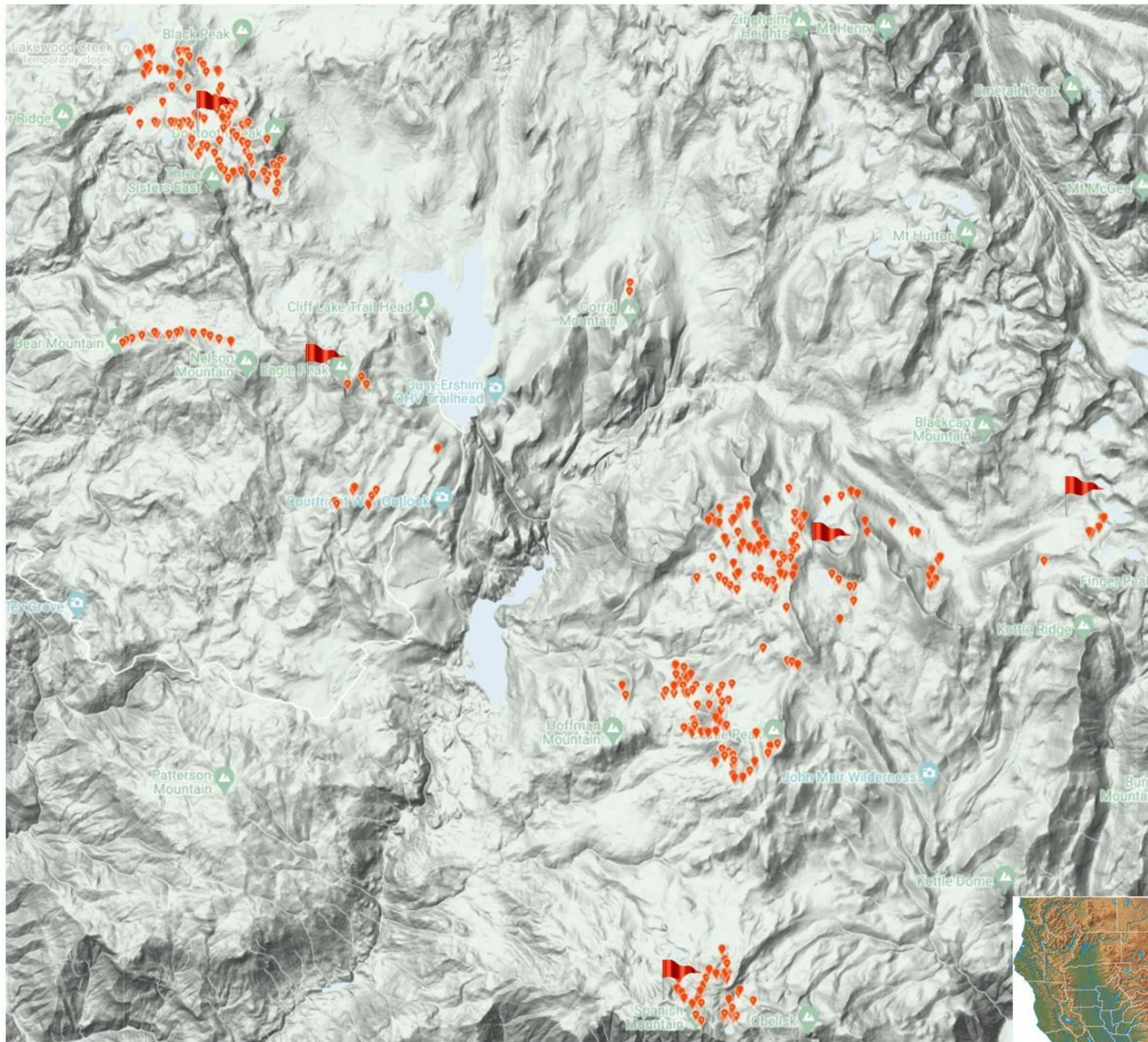
Bill Finch sierrahiker@comcast.net

<http://www.inaturalist.org/people/sekihiker>

Sierra Foothill



Conservancy



Orange dots = observations from this study
Red flags = previous observations

Location

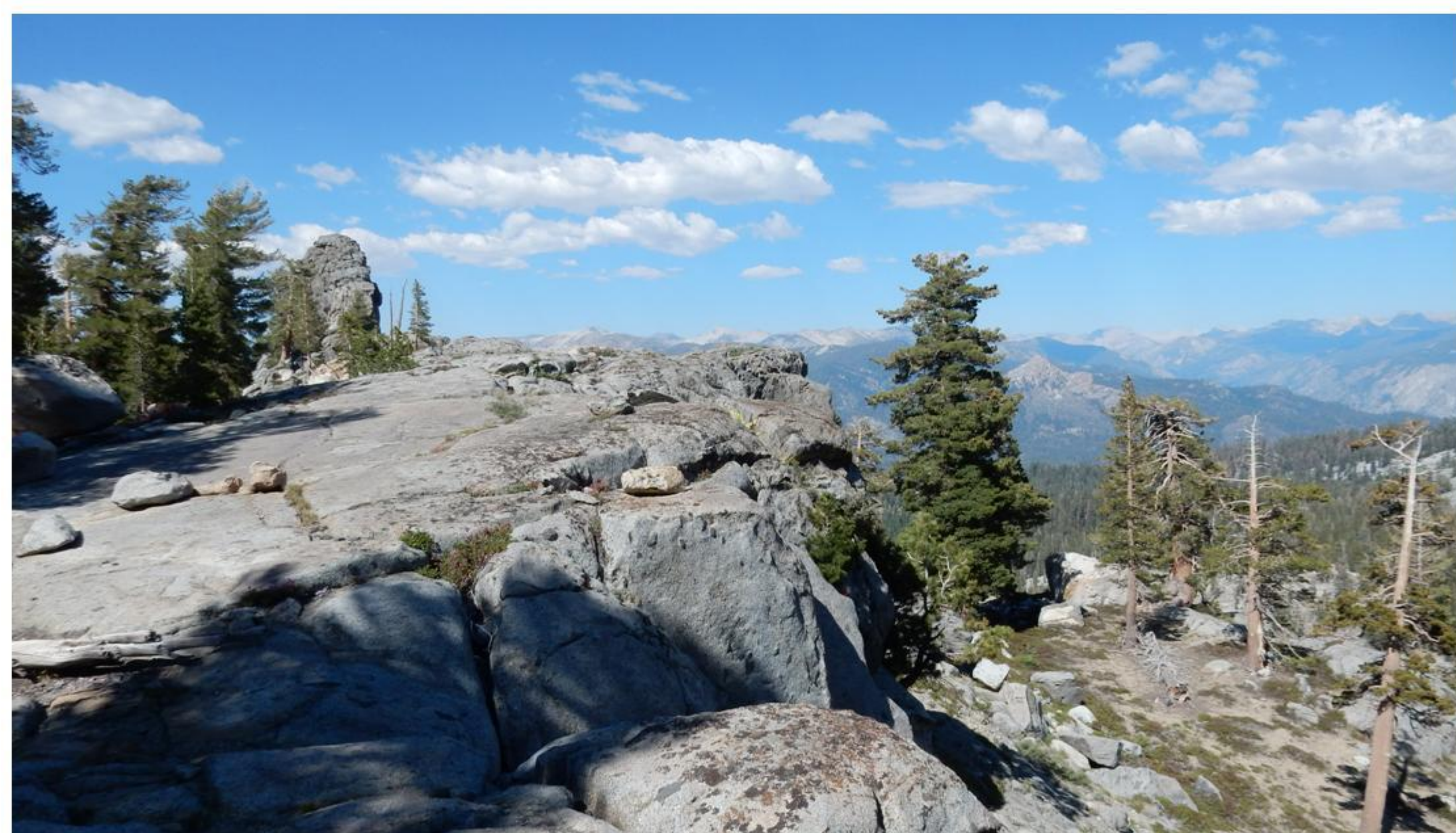
- Found in areas drained by North Fork of the Kings River
- Previous 13 observations in five widely separated areas
- 692 new observations have extended areal extent into several additional watersheds

Habitat

- Usually in soil of granitic origin on north facing slopes
- Elevation greater than 2,600m [8,680ft]
- No consistent association with other plants
- Usually not found close to other plants

Implications

- Continued study of distribution may help monitor effects of climate change



Typical habitat for *Lewisia leeana*, north of Spanish Mountain, John Muir Wilderness, el. 2,800m [9,200ft] 25 June 2015 <http://www.inaturalist.org/observations/1721302>

Methods

- Mapped, photographed, established location with GPS, and posted to iNaturalist during 113 hiking days in 2013-2021

Additional Data Gathered

- 3,276 other plants and fungi observed during the study
- 181 different species observed



Lewisia leeana observed at el. 3,000m [9,840ft], w of Castle Peak, John Muir Wilderness, Sierra National Forest 25 June 2014