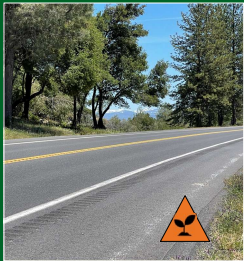


# SPECIAL-STATUS SPECIES & THEIR RELATIONSHIP TO ROADSIDES

HANNAH KANG  
HANNAH.KANG@ICF.COM 

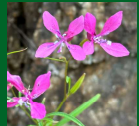
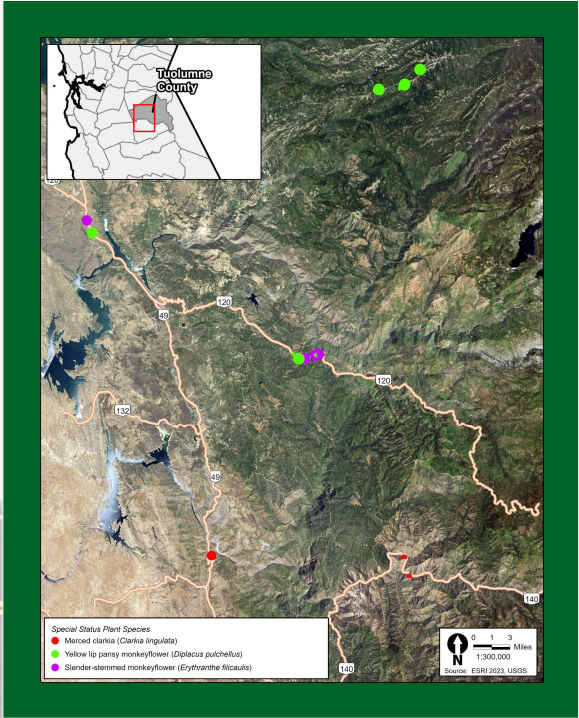
## WHY ROADSIDES



Special-status plant species have faced significant habitat loss and fragmentation in the last century. Roadside habitats have provided pockets of refugia for these rarities and may hold one of the only consistent habitats in the future. These plants have a unique genetic tolerance to environmental conditions and are disturbance tolerant. This poster highlights a small portion of special-status plant species found along roadsides during ICF's 2023 field season.

## CLARKIA SPECIES

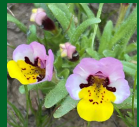
Rare *Clarkia* species like *Clarkia lingulata* and *Clarkia biloba* ssp. *australis* can be found within 5-50 feet from roadsides. *Clarkia* species have radiated recently, and these neo-endemics are often found in disturbed sites. *Clarkia lingulata* only has two occurrences that hug Hwy 140. Both rare *Clarkia* species have evolved rapidly and face selective pressures from disturbed environmental conditions.



*Clarkia lingulata*  
CRPR 1B.1 | CE



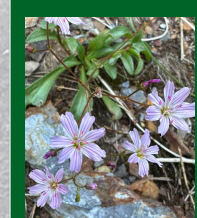
*Clarkia lingulata*  
Roadside Habitat



*Diplacus pulchellus*  
CRPR 1B.2

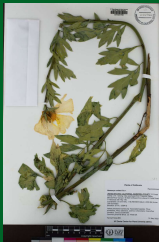


*Clarkia biloba* ssp. *australis*  
CRPR 1B.2



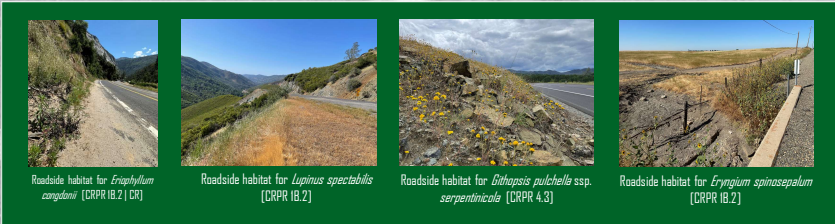
## LEWISIA CONDONGII

*Lewisia condongii* [CRPR 1B.2 | CR] has multiple occurrences on phyllite cliffs nearby Hwy 140 and Hwy 180. The rare *Lewisia* photographed is from a known occurrence in the Merced River Canyon (~20 ft from Hwy 140). Reproductive isolation has resulted in many endemic and rare *Lewisia* species in California.



## ROMNEYA COULTERI

*Romneya coulteri* [CRPR 4.2] is more prominent in Southern California and is a clonal species. *Romneya coulteri* was originally cultivated in the region and has successfully persisted throughout the Merced River Canyon.



## LITERATURE REVIEWED & ACKNOWLEDGMENTS

Forman Sperling et al. 2003. Road Ecology: Science and Solutions. Island Press.

Briscoe Runquist RD, Chu E, Iverson JL, Kapp JC, Moeller DA. Rapid evolution of reproductive isolation between incipient outcrossing and selfing *Clarkia* species. *Evolution*. 2014 Oct;68(10):2885-900. doi: 10.1111/evo.12488. Epub 2014 Aug 13. PMID: 25041516.

Thank you to Caroline Clarkson (ICF) for her GIS expertise. Thank you to DAV for curating all my specimens collected during 2023.