

HISTORICAL TRENDS IN THE EMERGENCE OF THE EPHEMERAL GEOPHYTES, *DICENTRA UNIFLORA* AND *DICENTRA PAUCIFLORA* (PAPAVERACEAE) IN CALIFORNIA

HALKARD E. MACKEY, JR.

Ephemeral geophytes that last 5 to 6 weeks in springtime after snowmelt.

Flowers last 2 to 3 weeks, thus are collected in a short time window.

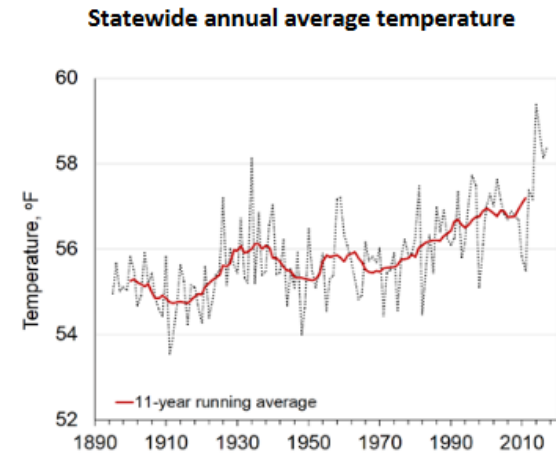
Historical collections from late 1800s to present in the herbaria of California and are online as scanned images with information on date of collection and elevation.



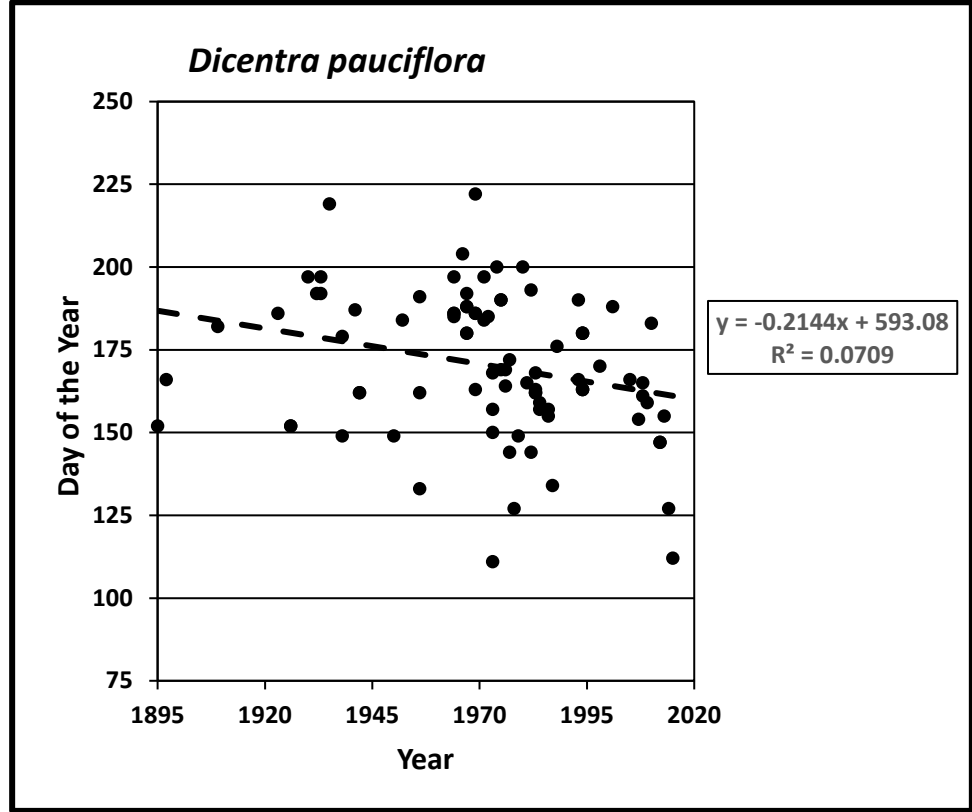
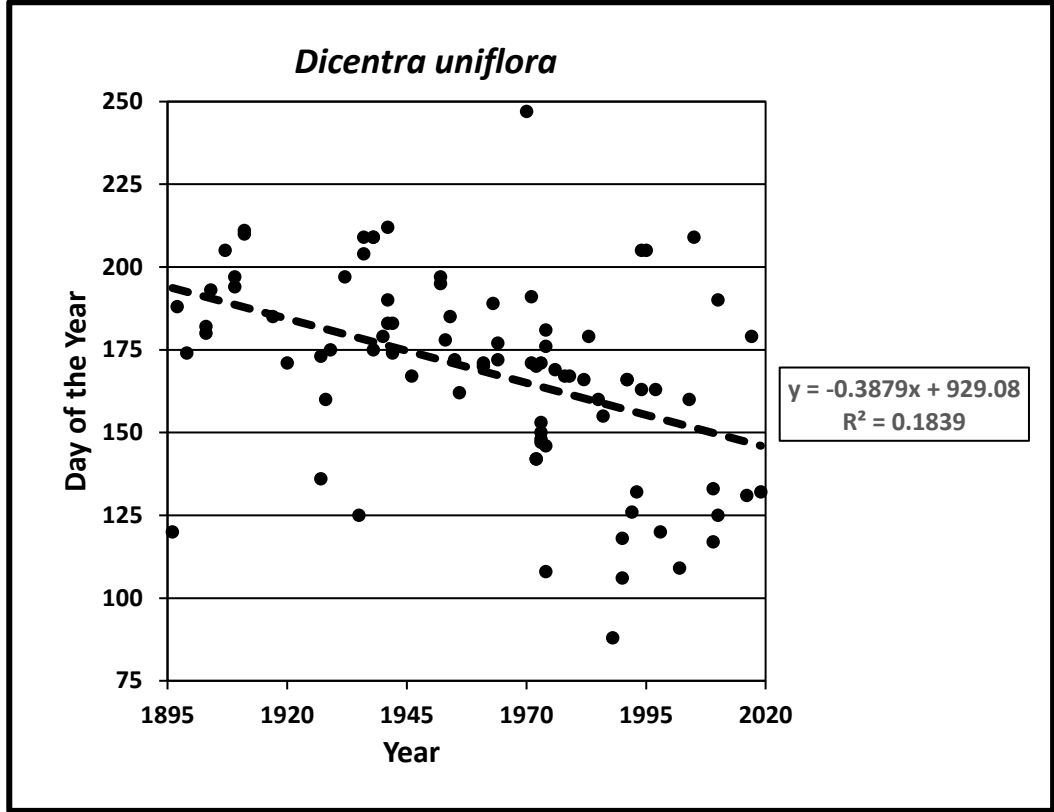
Dicentra uniflora

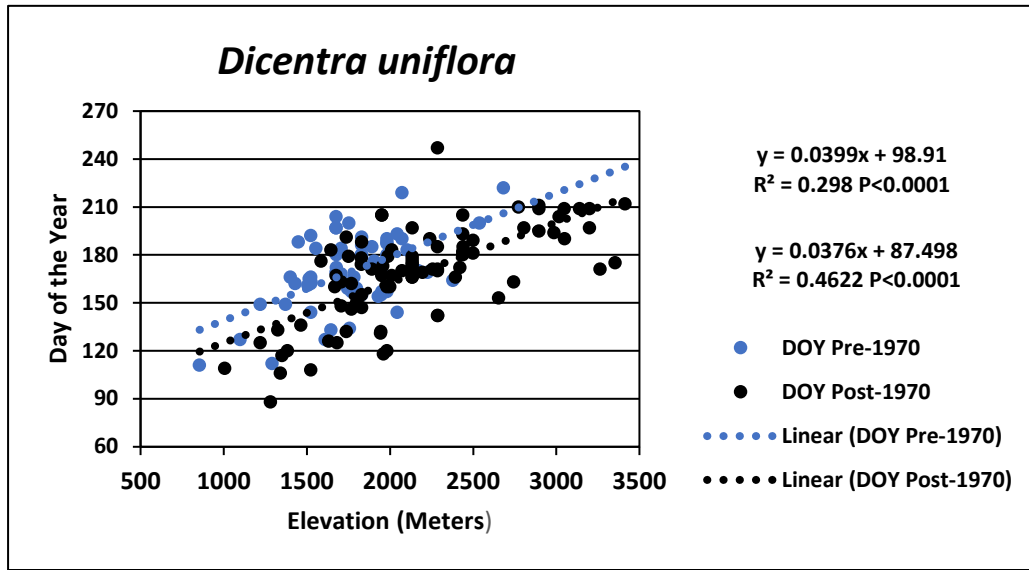


Dicentra pauciflora

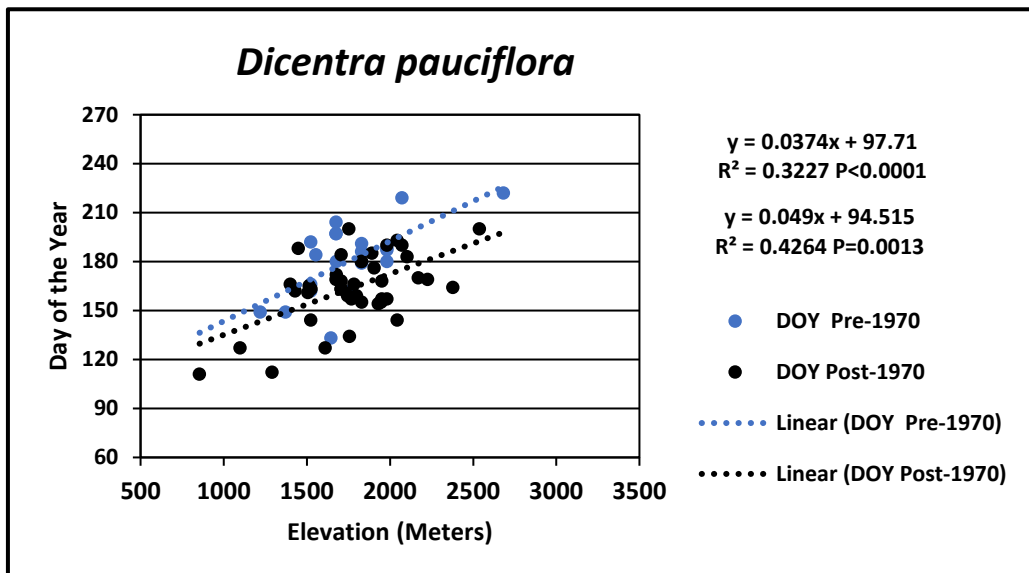


These characteristics and historical data make them candidates for evaluation of climate change in Northern California.





<i>Dicentra uniflora</i>	
Elevation (Meters)	Days Earlier
1000	13.7
1500	14.8
2000	16
2500	17.2



<i>Dicentra pauciflora</i>	
Elevation (Meters)	Days Earlier
1000	8.4
1500	14.2
2000	20
2500	25.8