

2024 Northern California Botanists Symposium



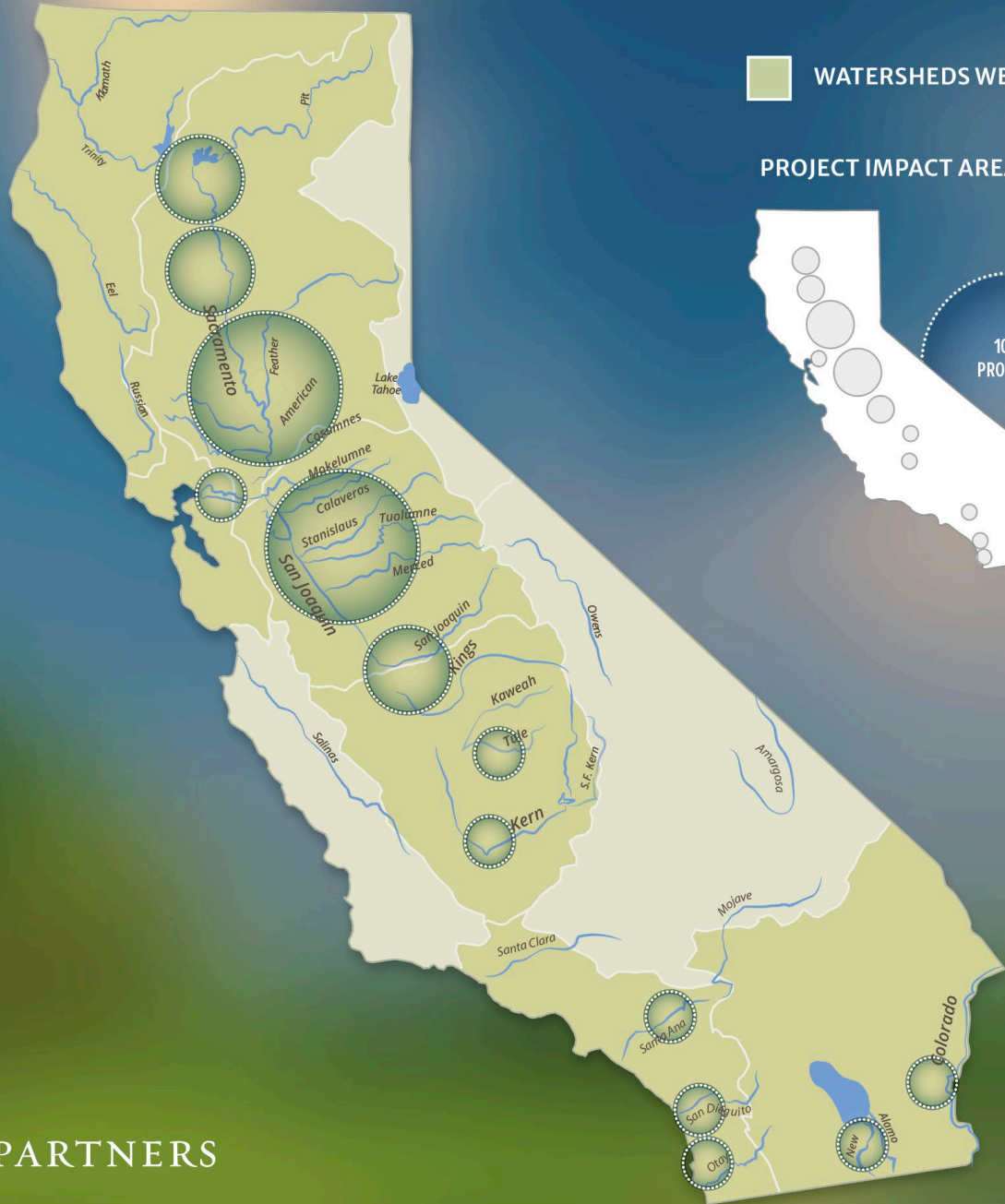
RIVER PARTNERS

Floodplain restoration on disconnected gravel bars
in the Sacramento watershed

Michael Rogner

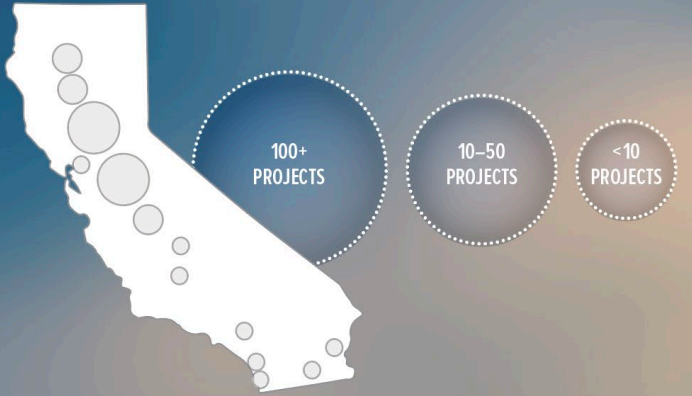
Associate Director of Restoration Science

www.riverpartners.org



■ WATERSHEDS WE REACH

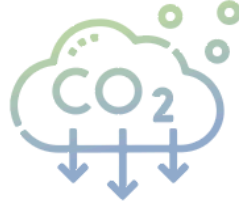
PROJECT IMPACT AREAS 1998-2023





18,867

Acres of protected habitat restored for endangered and threatened species.



1,006,787

Metric tons of CO2, CO2e, or greenhouse gases captured.



10,270,207,000

Gallons of freshwater conserved.



212

River miles restored.



\$175,416,280

Channeled directly to the communities where we work.



4,078,494

Native trees & vegetation planted.



58

Priority wildlife species protected since 1998.

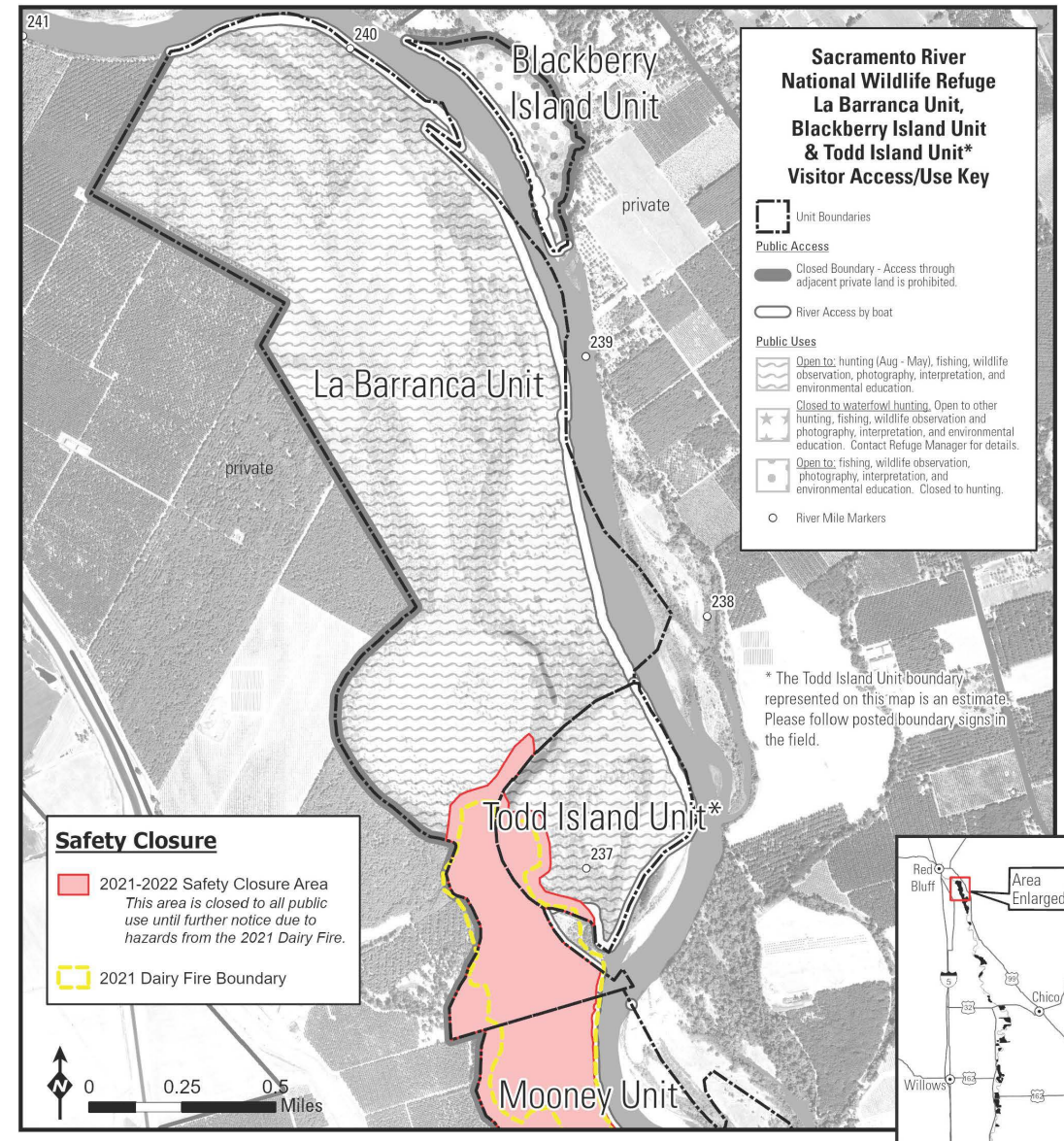
Dos Rios Ranch – California's newest State Park!



Project Overview

•River Partners restored 316 acres of 1,066 acre Unit

- 44,812 woody species
- 44,787 herbaceous plugs
- 2,8000 pounds native grass seed
- 41 pounds late summer wildflower seed

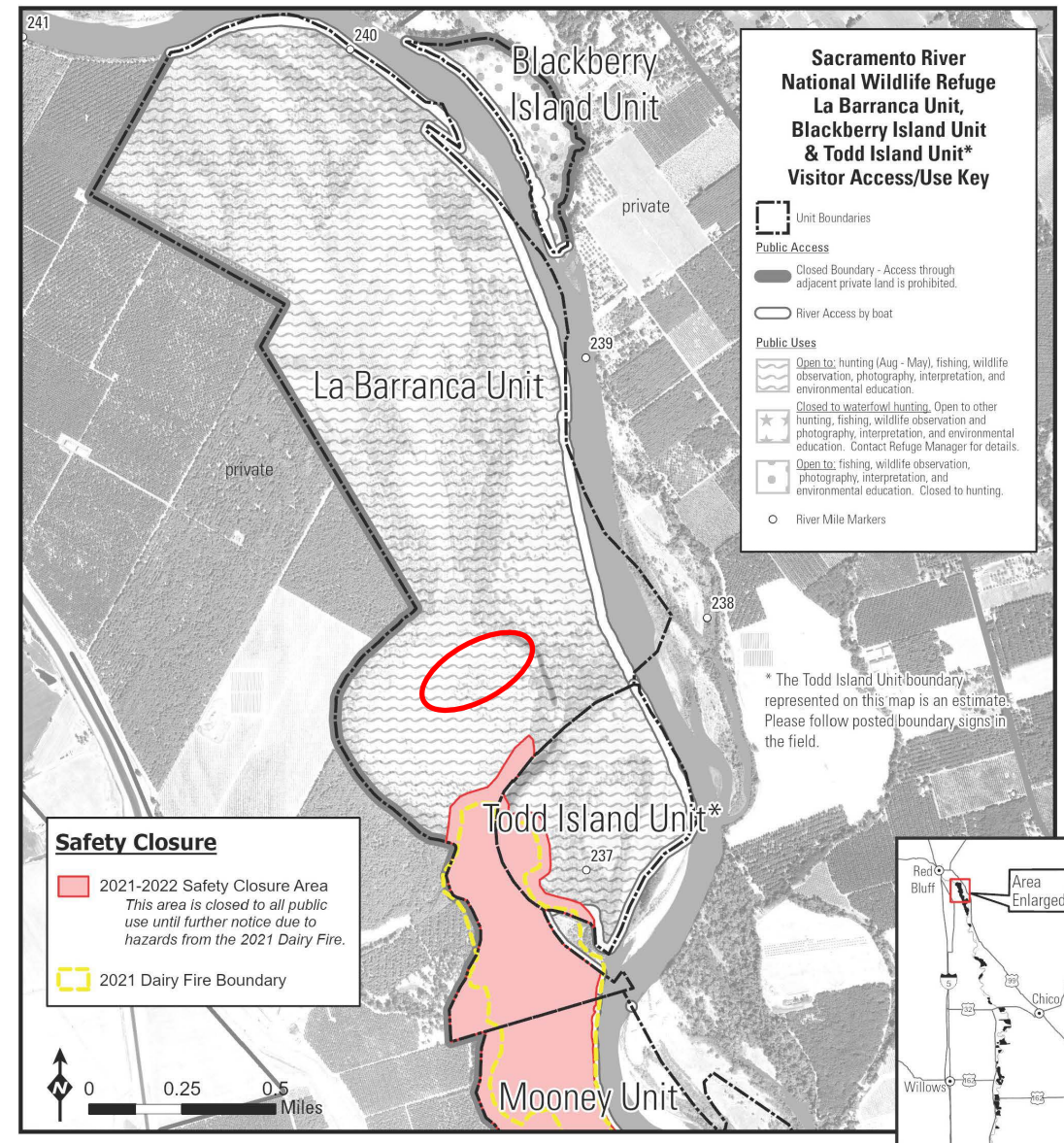


RIVER PARTNERS

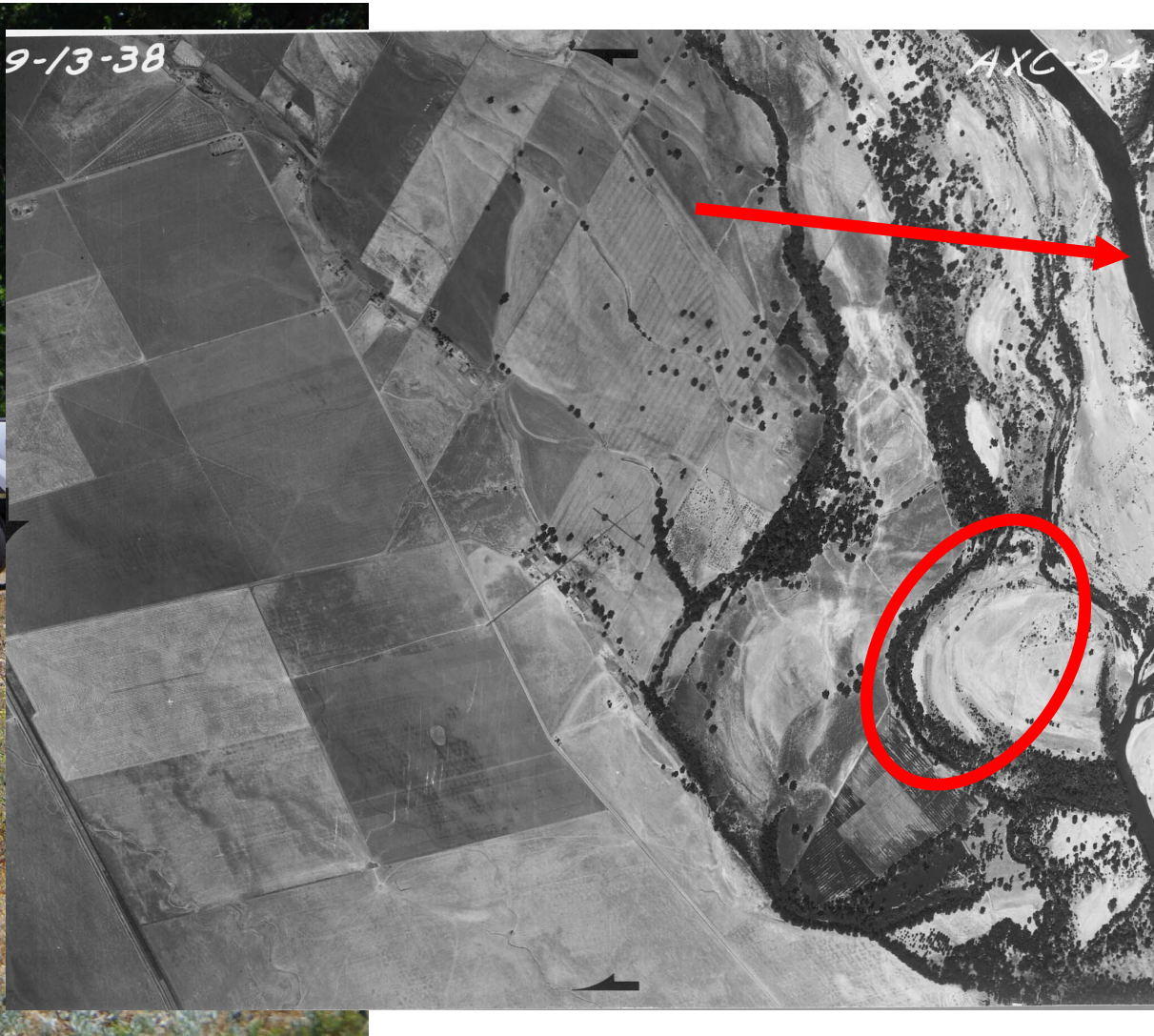
Project Overview

•River Partners restored 316 acres of 1,066 acre Unit

- 44,812 woody species
- 44,787 herbaceous plugs
- 2,8000 pounds native grass seed
- 41 pounds late summer wildflower seed



RIVER PARTNERS





Shasta Dam construction 1938-1945

Site Assessment

soils

water source

maintenance



Trichostema lanceolatum



Eriogonum nudum
Eriogonum wrightii



Centromadia fitchii



Heterotheca oregona



Heterotheca grandiflora



Grindelia camporum

Gumplant

Telegraph Weed

Spike Weed

Vinegar Weed

Goldenaster

Wright's Buckwheat

Naked Buckwheat



Gumplant

Telegraph Weed

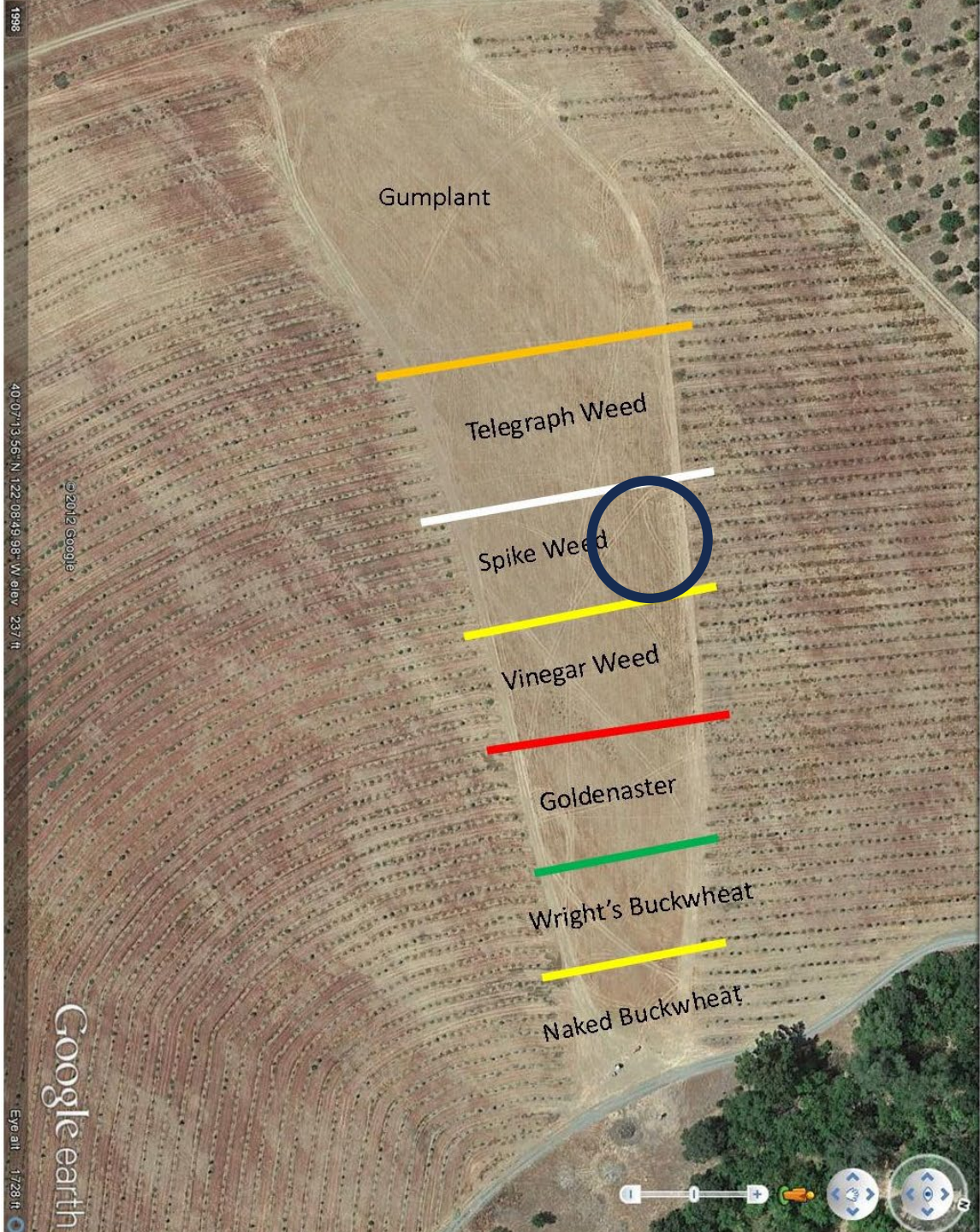
Spike Weed

Vinegar Weed

Goldenaster

Wright's Buckwheat

Naked Buckwheat



Maintenance?

- Light discing for field prep
- No weed control
- No irrigation



Monitoring Native Forb Restoration at a Sacramento River
Gravel Bar Site: Improving Methods for the Future

Lexi Smith

Independent Honors Research Project, 2016-2017

Department of Geological and Environmental Sciences, CSU, Chico

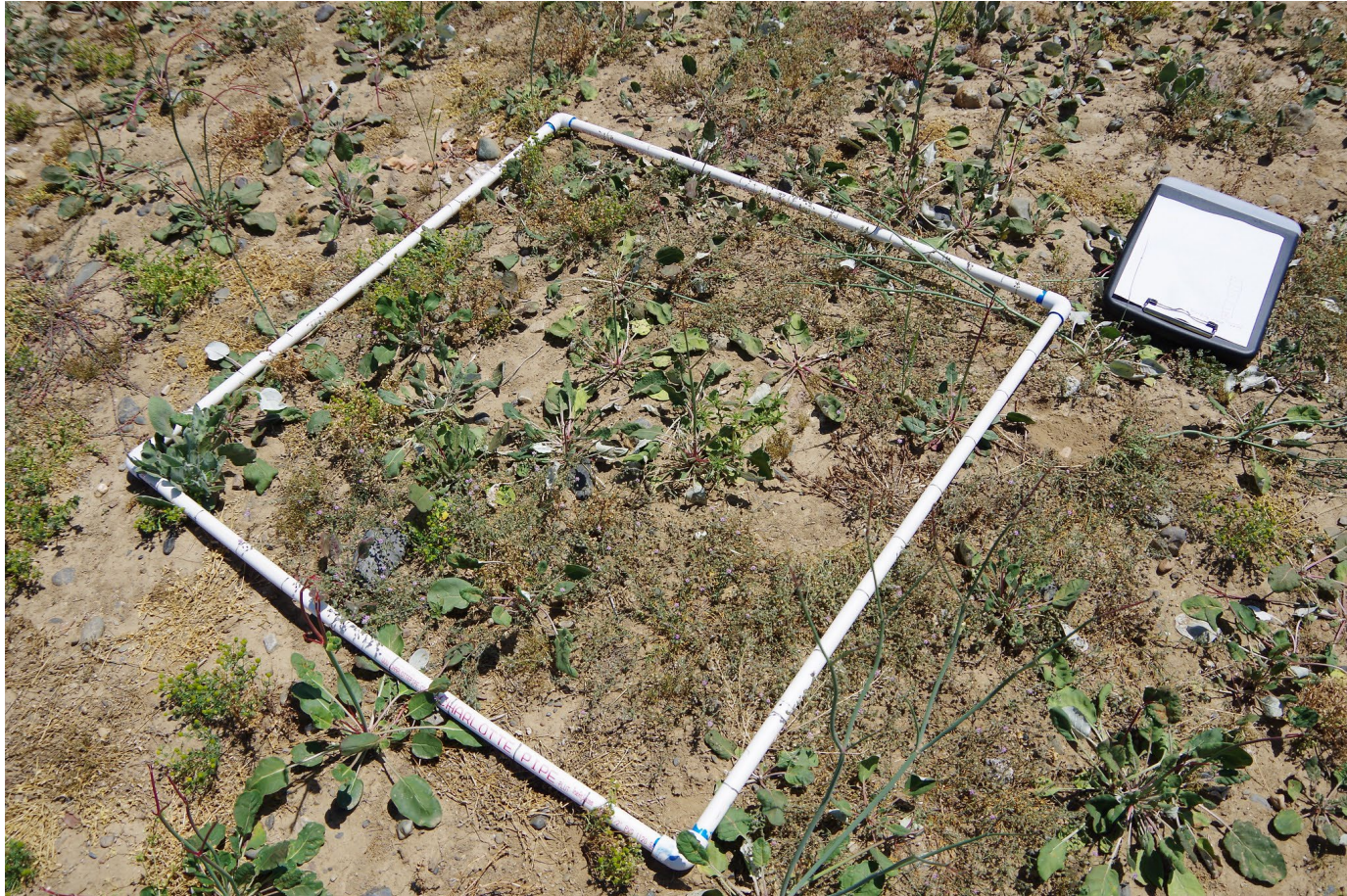


Restoration of Native Forb Species on a
Sacramento River Gravel Bar: A Follow-
Up Study



HE WHO PLANTS A TREE
PLANTS A HOPE.
— LUCY LARCOM

JESSICA SHIPPEN
RIVER PARTNERS
580 Vallombrosa Ave, Chico, CA 95926



One m² plots

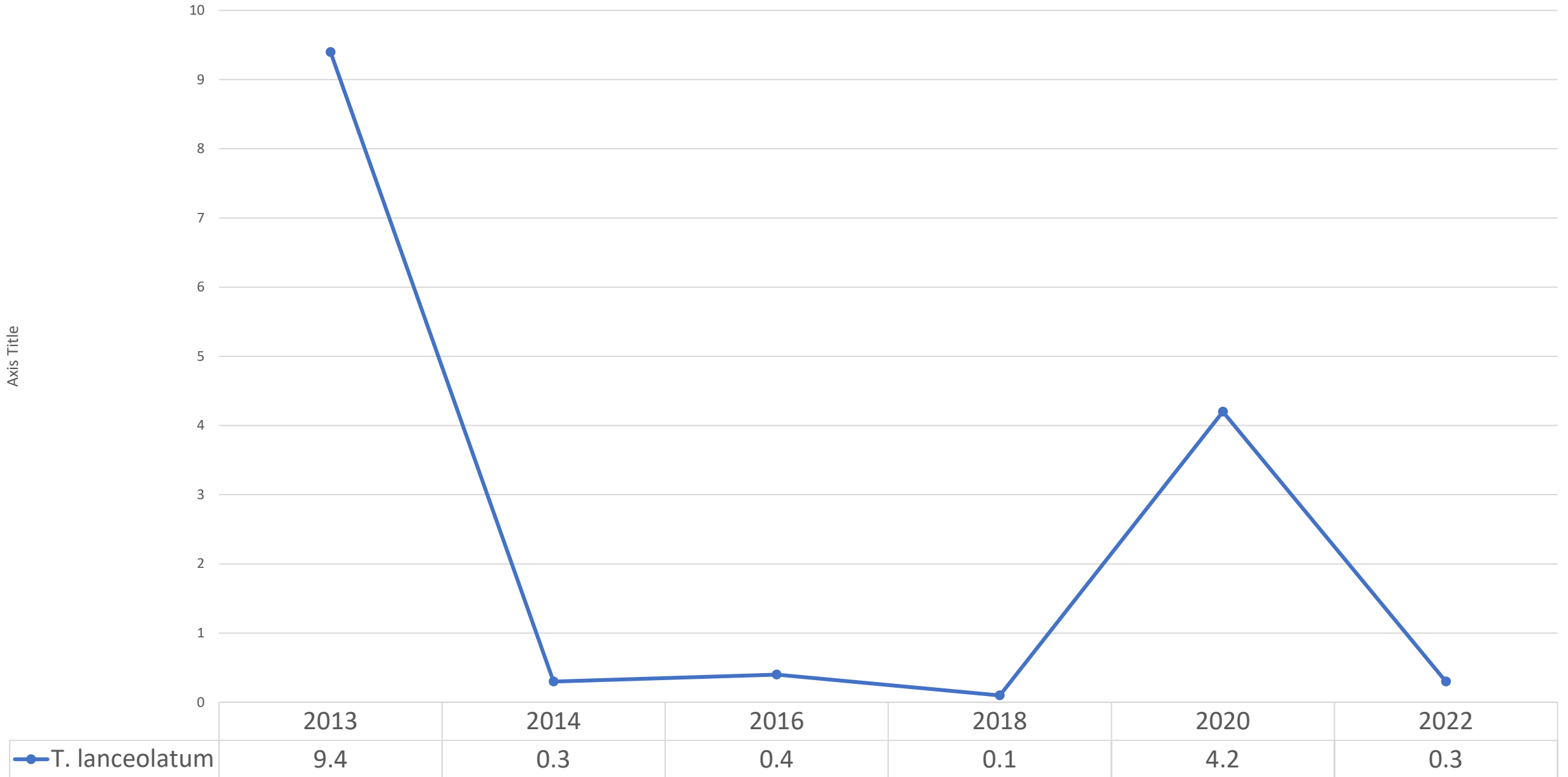
Stem counts

Random sampling within bins

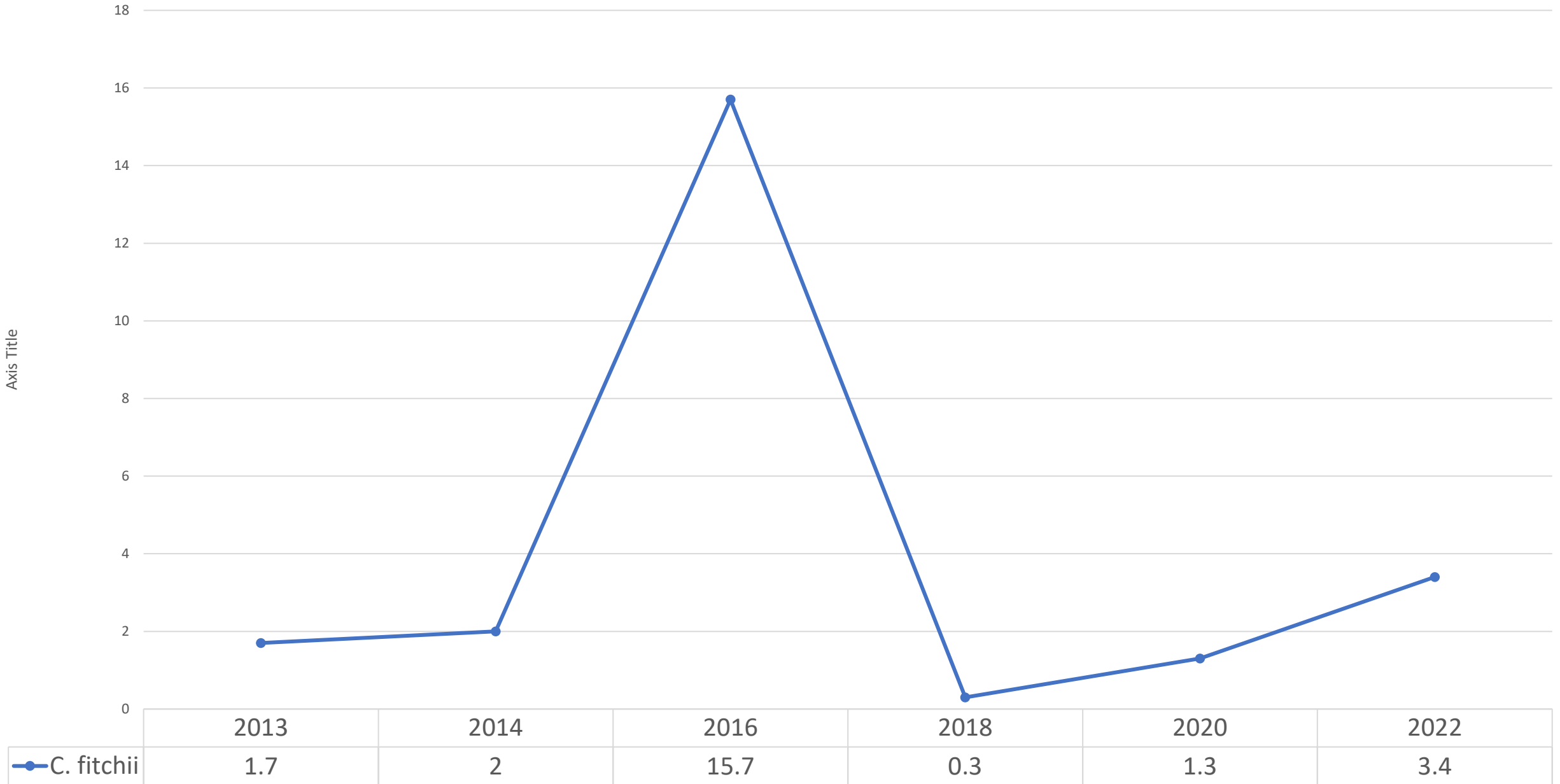
Monitored 2013, 2014, 2016, 2018, 2020, 2022, (2024), (2026), etc...

Goal (perennial): 1-stem per m²

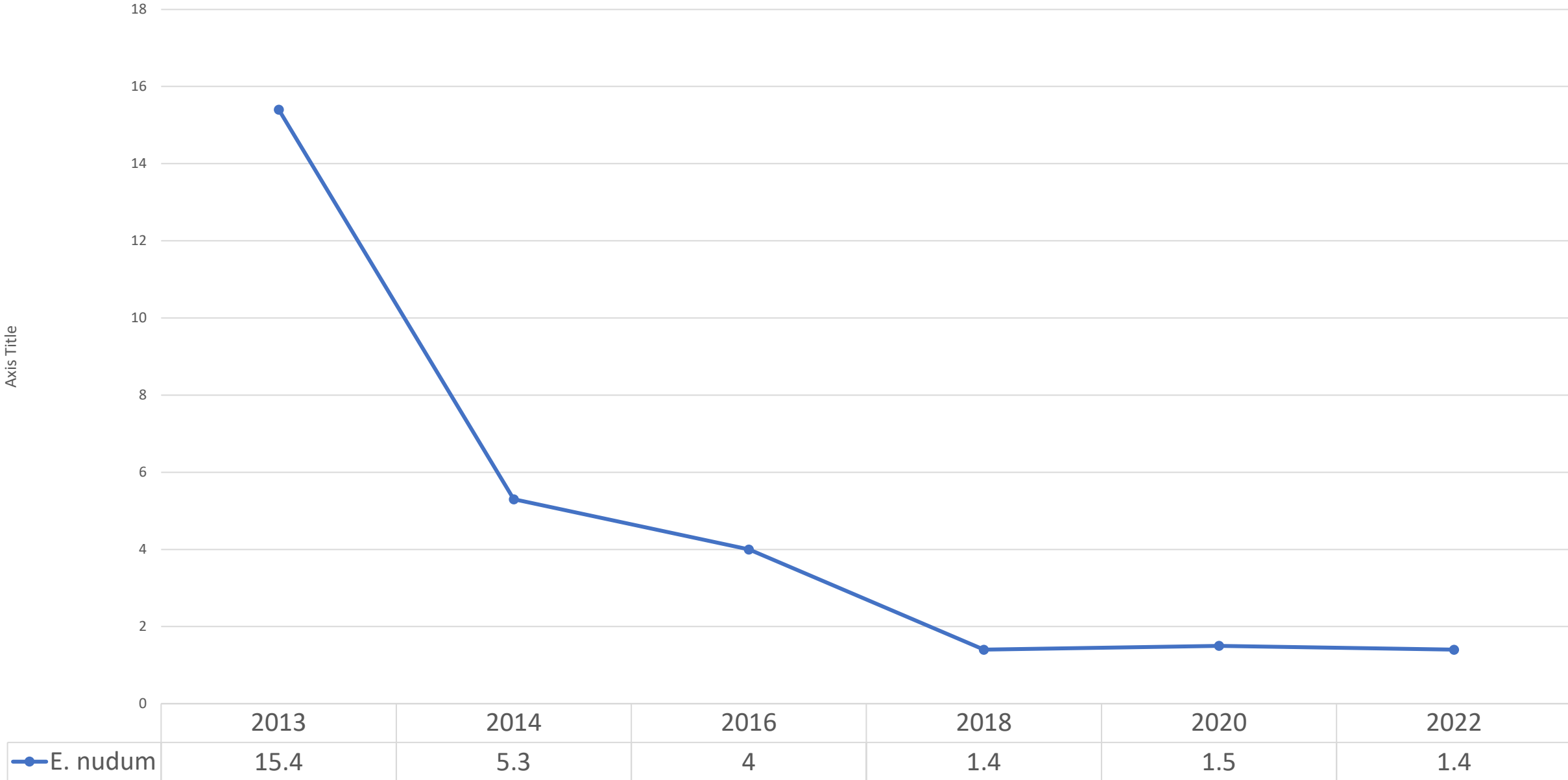
Trichostema lanceolatum



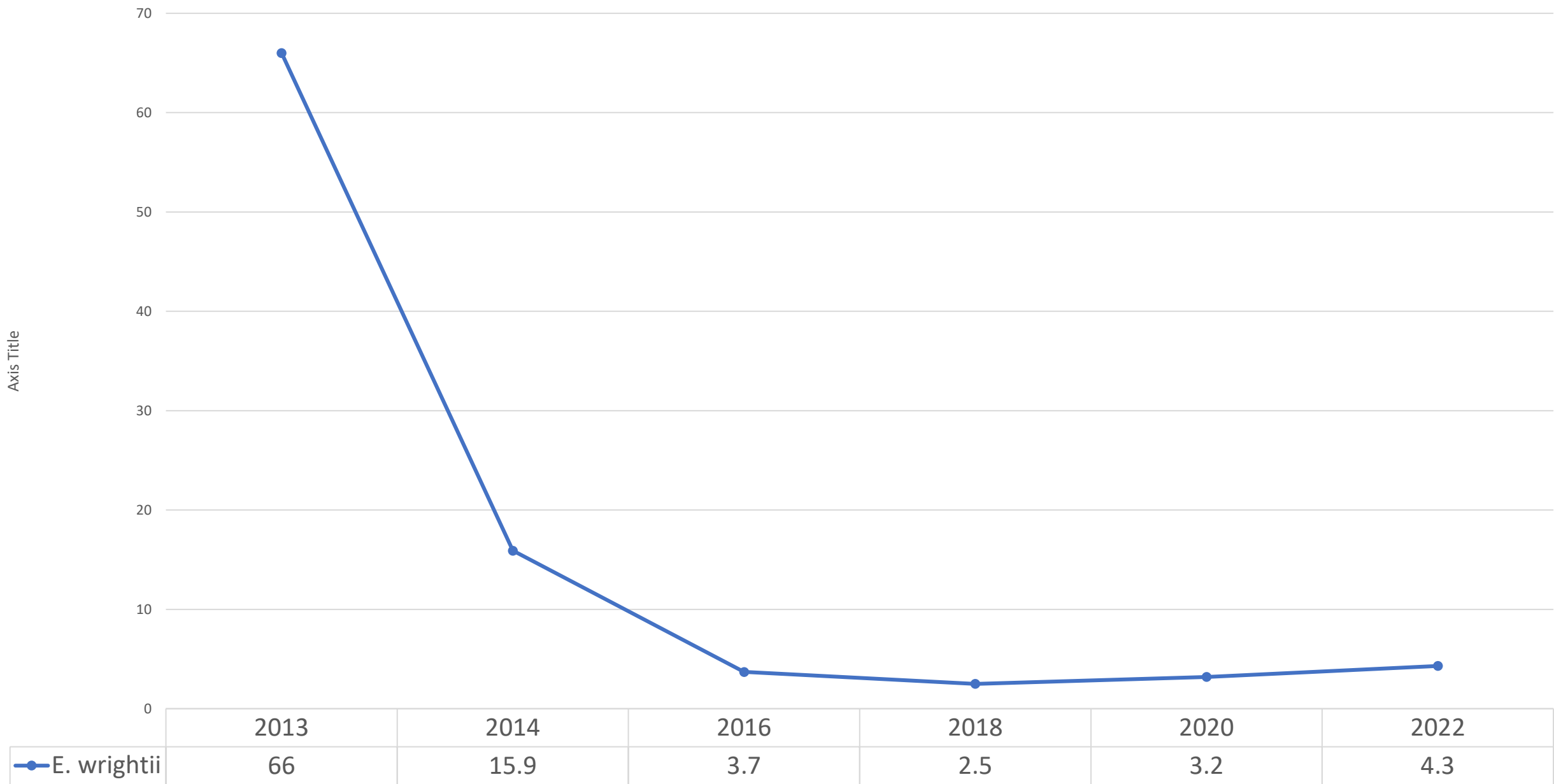
Centromadia fitchii



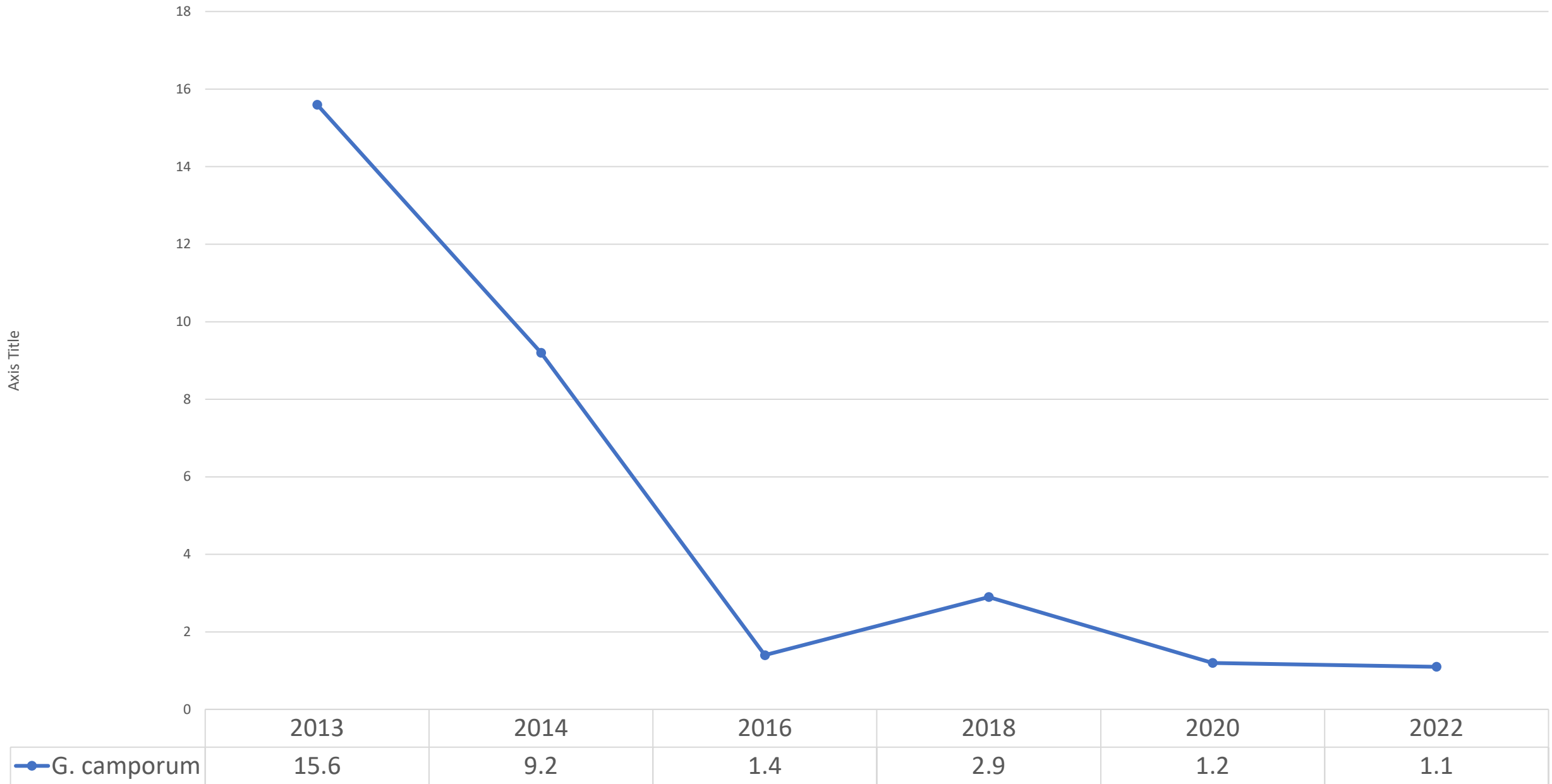
Eriogonum nudum



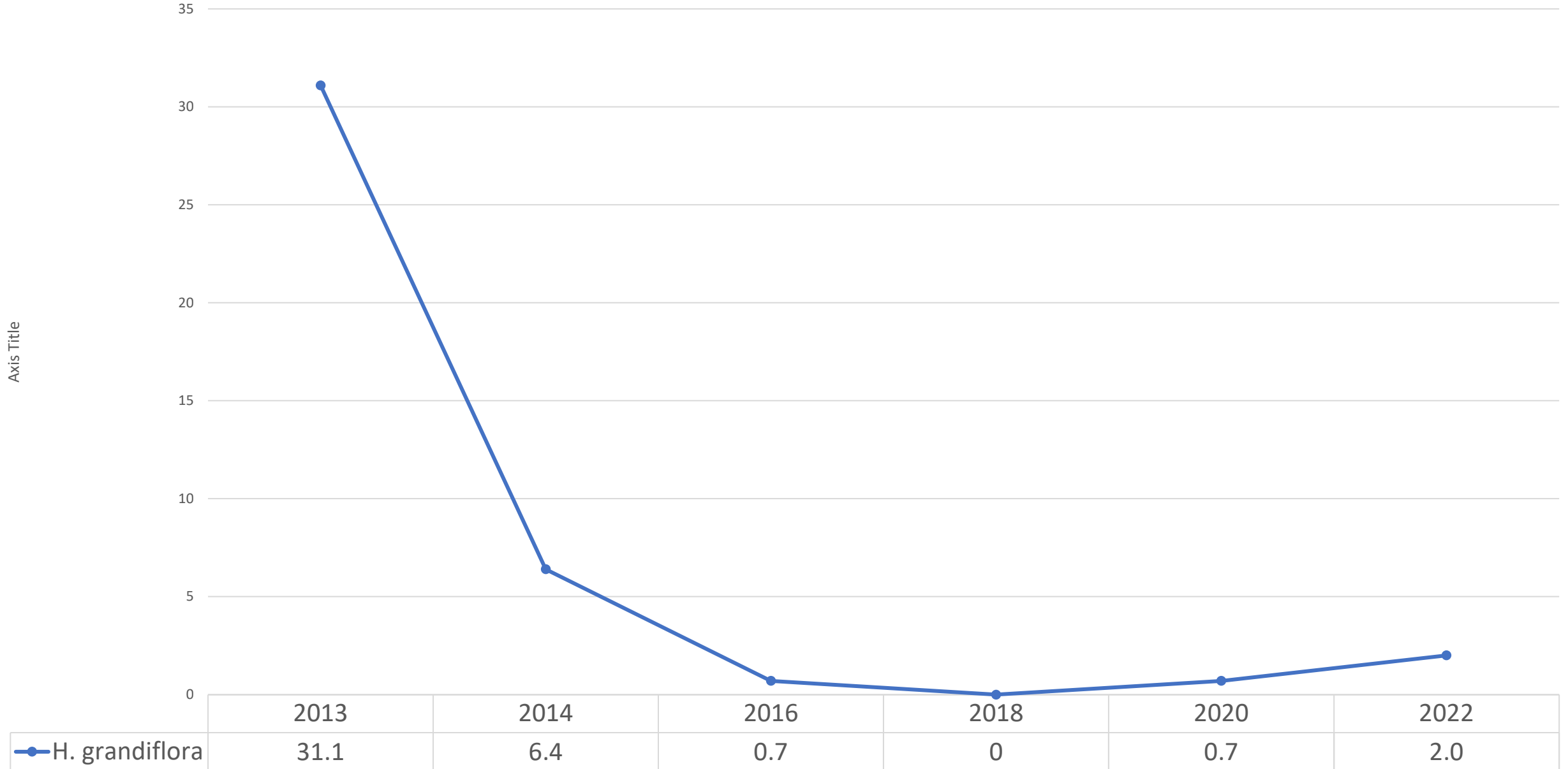
Eriogonum wrightii



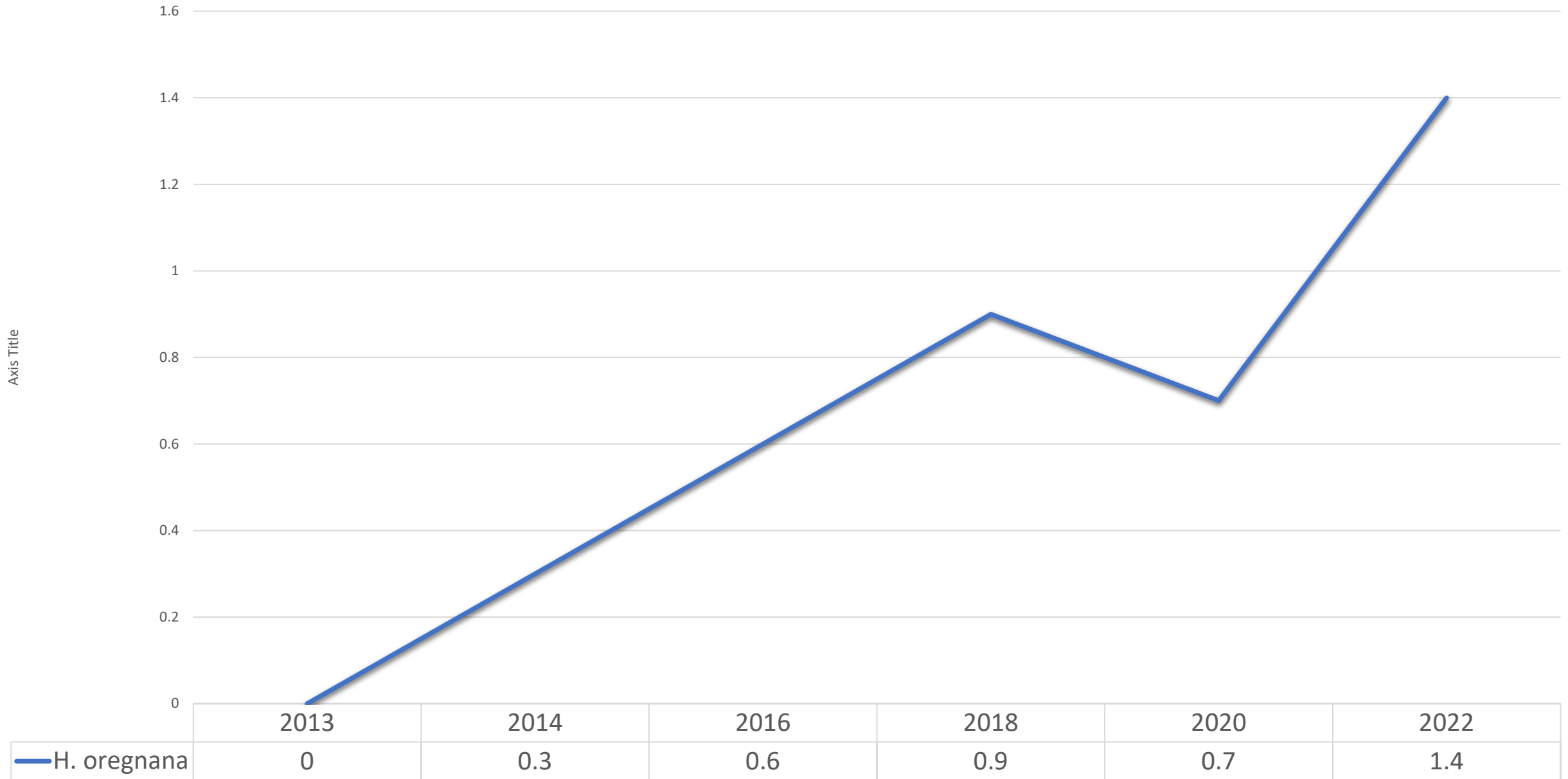
Grindelia camporum



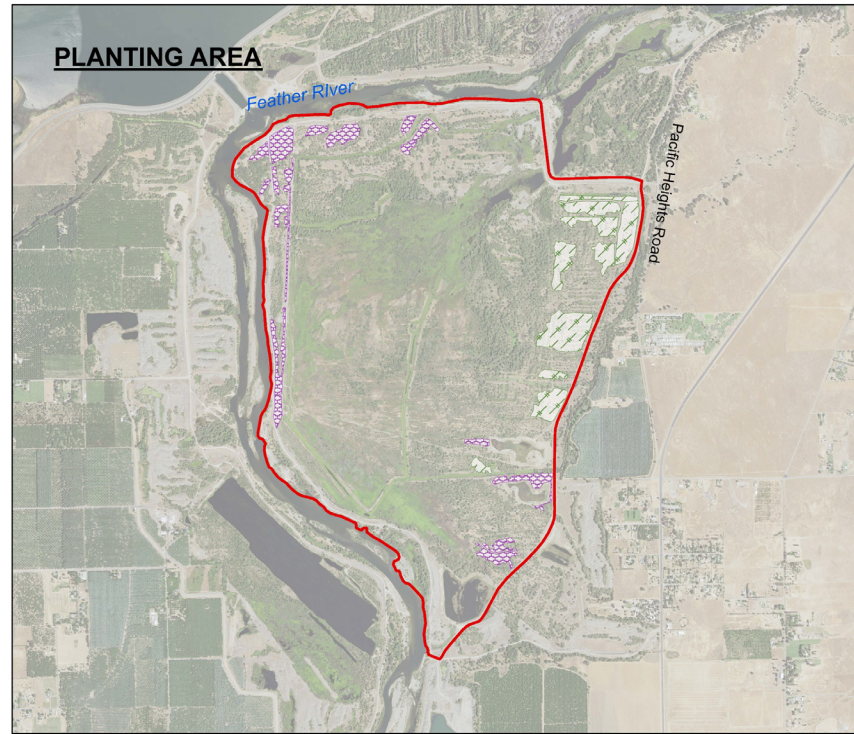
Heterotheca grandiflora






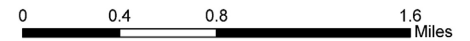
Heterotheca oregana



Next Steps





-  Project Boundary (1,572 acres)
-  Riparian Woodland and Scrub Plantings (70.86 acres)
-  Gravel Understory Plantings (48.51 acres)



1 inch = 2,000 feet

100% Design

SHEET L4 DATE 06-22-16	OWA RESTORATION Butte County, California		Prepared For: Sutter Butte Flood Control Agency Post Office Box M Yuba City, California 95991 530.755.9859	Prepared By:  <small>580 Vallombrosa Avenue Chico, CA 95926 (530) 894-5401 (530) 894-2970 www.RiverPartners.org</small>
	Riparian Restoration Planting Area			

Keep testing additional species



Wildlife monitoring in partnership with
the Xerces society





QUESTIONS?

