

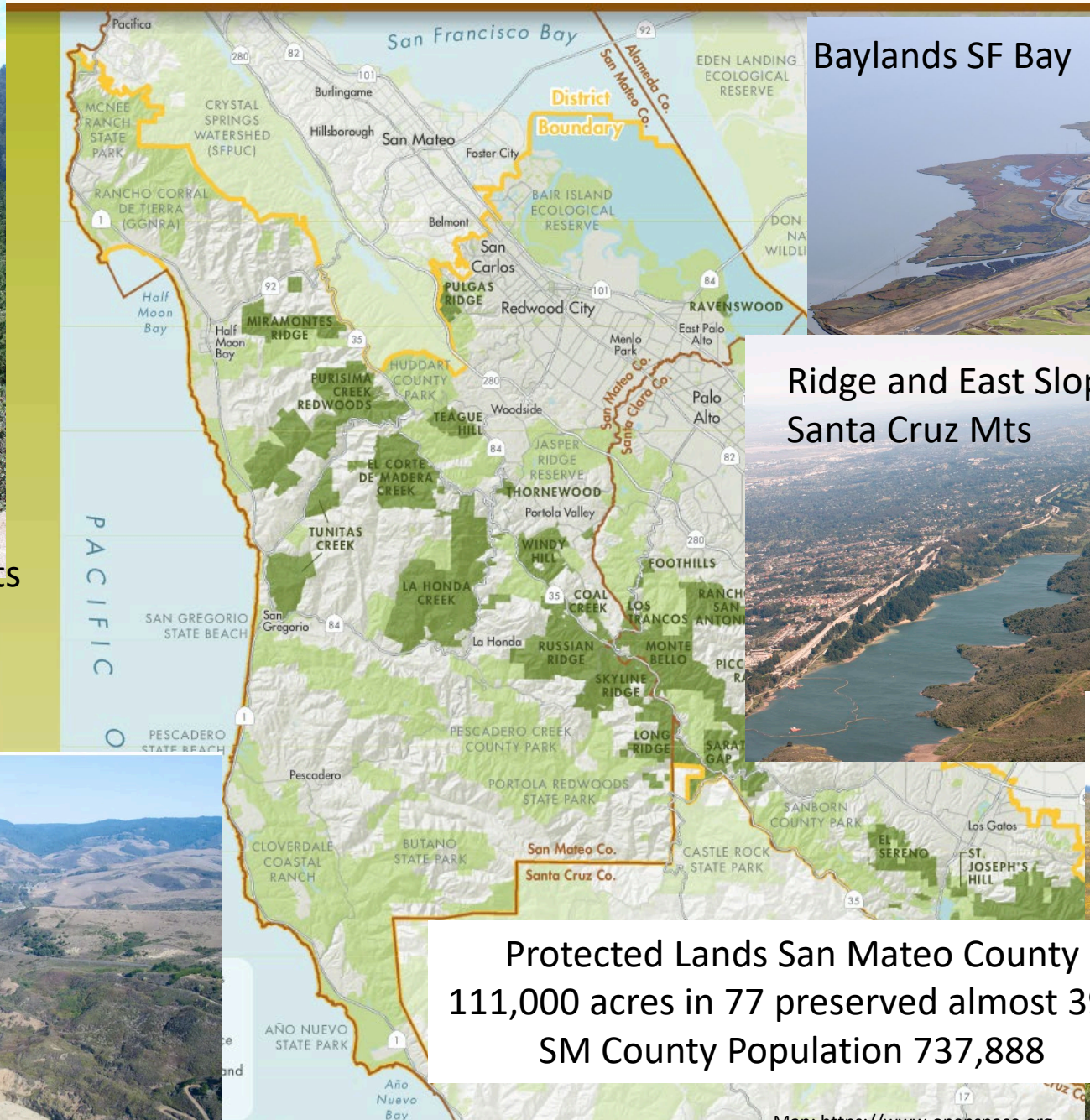
# Checklist (Digital) of the Flora and Locally Rare Taxa of San Mateo County By Toni Corelli 2024



West Slope Santa Cruz Mts



San Mateo Coast



Baylands SF Bay



Ridge and East Slope Santa Cruz Mts



Serpentine Grasslands

Protected Lands San Mateo County  
111,000 acres in 77 preserved almost 39%  
SM County Population 737,888

Map: <https://www.openspace.org>

# Checklist of the Vascular Plants of San Mateo and Santa Clara Counties, California



*Viola adunca* ssp. *adunca*  
WESTERN DOG VIOLET



*Hosackia gracilis*  
HARLEQUIN LOTUS



*Mentzelia lindleyi*  
LINDLEY'S BLAZING STAR

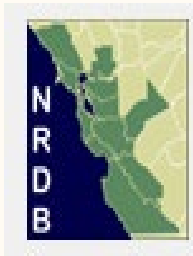
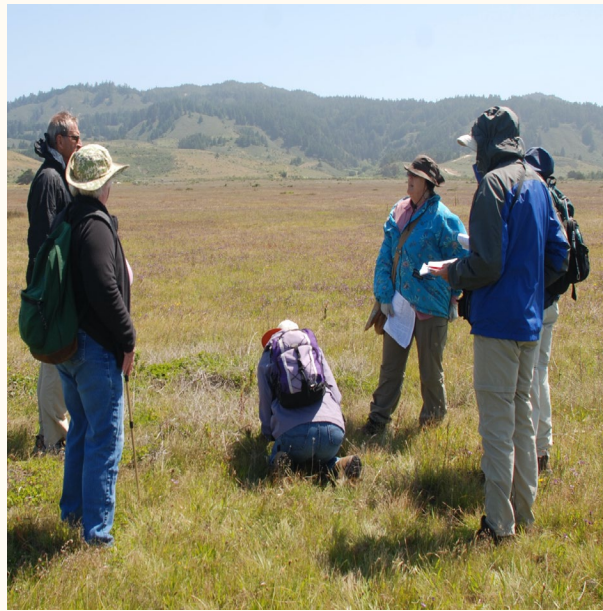


*Castilleja densiflora* ssp. *densiflora*  
OWL'S-CLOVER



*Lilium pardalinum* ssp. *pardalinum*  
LEOPARD LILY

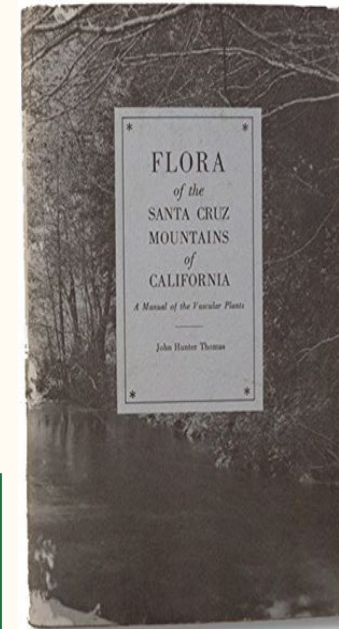
by Toni Corelli  
for the Santa Clara Valley Chapter  
of the California Native Plant Society  
2011



## SOME TOOLS

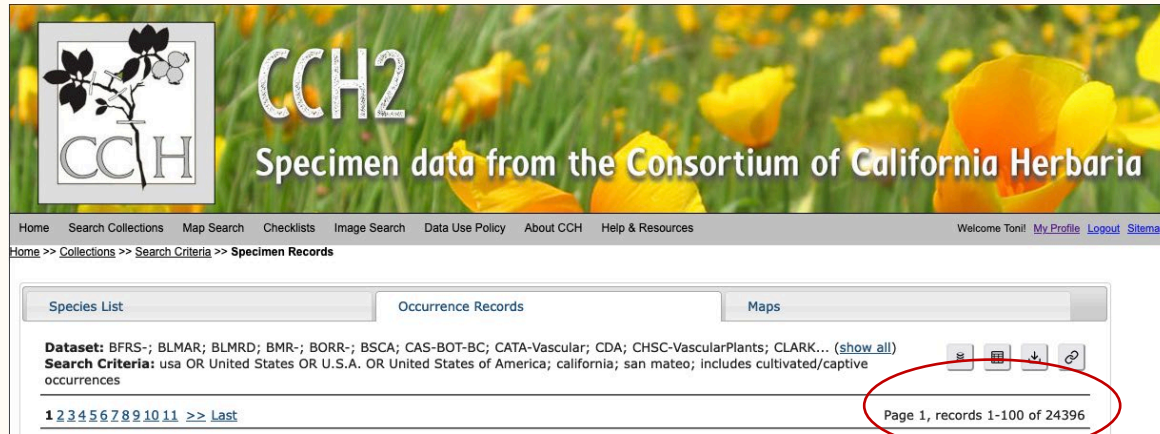


Consortium of  
California Herbaria



Jepson eFlora

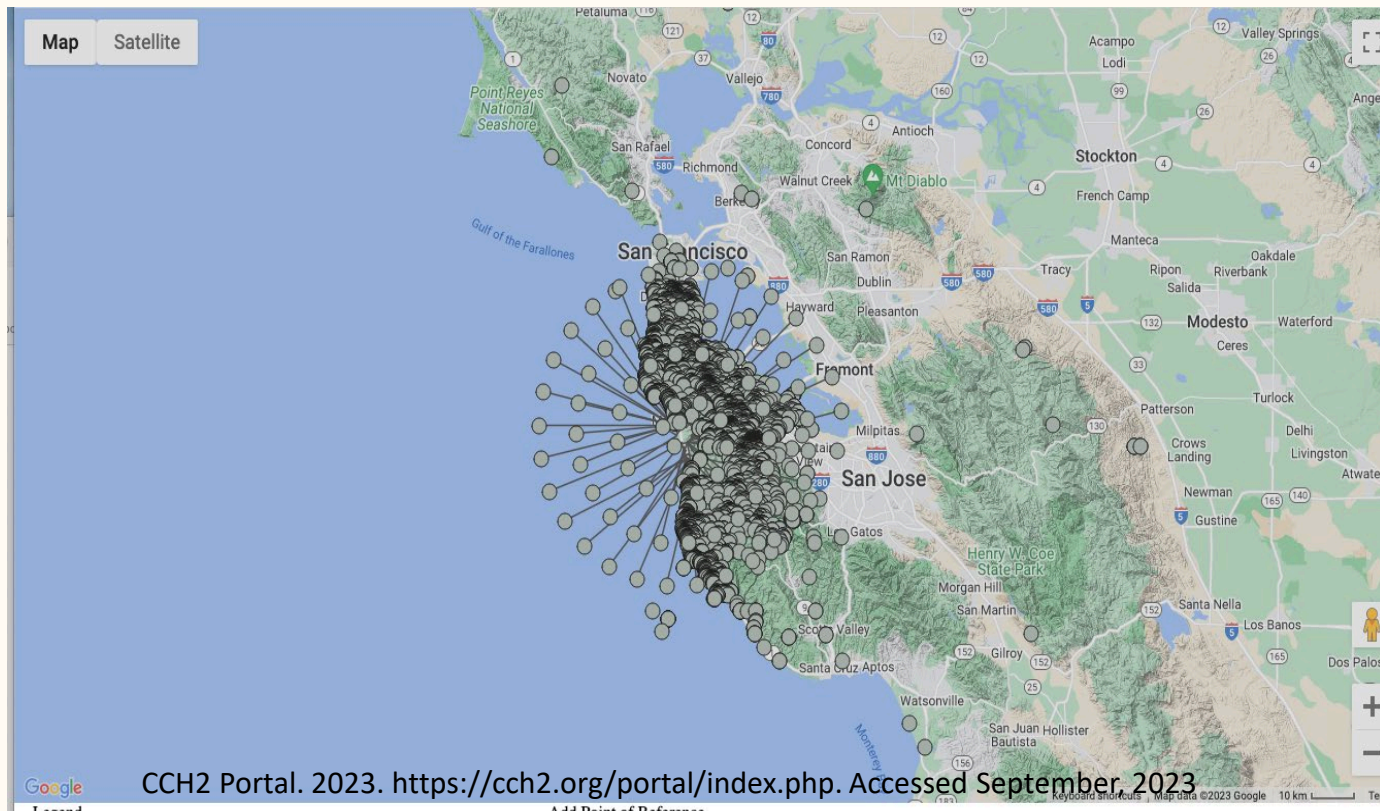
# 24,396 records in the Consortium of California Herbaria (CCH2) for San Mateo County most with location information



The screenshot shows the CCH2 website interface. At the top, there is a logo for CCH2 and the text "Specimen data from the Consortium of California Herbaria". Below this, there is a navigation menu with options like "Home", "Search Collections", "Map Search", "Checklists", "Image Search", "Data Use Policy", "About CCH", and "Help & Resources". The main content area has tabs for "Species List", "Occurrence Records", and "Maps". Under "Occurrence Records", there is a search criteria section with a "show all" link and a "Page 1, records 1-100 of 24396" indicator circled in red.



The screenshot shows the Jepson Herbarium website. At the top, there is a blue header with the text "The Jepson Herbarium" and "University of California, Berkeley". Below this, there is a navigation menu with options like "Home", "About", "Research", "Databases", "eFloras", "Education & Outreach", "Archives", "Contact", and "Donate". The main content area features a section titled "Jepson eFlora" with several images of plants and a "Phylogenetic index to families" diagram. A citation at the bottom reads: "The Jepson eFlora is the foremost authority on the native and naturalized vascular plants of California. For plants occurring in wildlands or otherwise outside of cultivation, the Jepson eFlora contains taxonomic treatments, distribution maps, illustrations, photographs, and identification keys. Citation: Jepson Flora Project (eds.) 2023. Jepson eFlora, <https://ucjeps.berkeley.edu/eflora/> [accessed on Dec 01, 2023]."



UPDATING THE THE CHECKLIST WE KNOW MORE THAN EVER ABOUT THE BOTANICAL HISTORY THROUGH THESE COLLECTION THE RECORDS

THE INFORMATION ON THE HERBARIUM LABELS TELL US THE WHO-WHAT-WHERE-WHEN AND USING THE UPDATED CHECKLIST DATABASE WE ALSO KNOW:

- HOW MANY NATIVE AND NONNATIVE PLANTS WE HAVE THAT HAVE BEEN VOUCHERED
- NUMBER OF TIMES EACH SPECIES HAS BEEN COLLECTED
- WHERE IN SAN MATEO COUNTY THE COLLECTION WAS MADE

SOME HERBARIUM LABELS HAVE:

- HABITAT INFORMATION
- SIZE OF POPULATIONS
- ASSOCIATED PLANTS
- AND OTHER IMPORTANT INFORMATION

THIS INFORMATION IS VERY HELPFUL WHEN STUDYING THE BOTANICAL HISTORY OF OUR REGION

## CHECKLIST DATABASE STATS FOR SAN MATEO COUNTY FLORA 2023

Native Taxa	1,087
Non-native (naturalized) Taxa	<u>476</u>
Total Taxa San Mateo County (SM Co)*	1,563

1,502 HAVE VOUCHERS ----- 61 DO NOT HAVE VOUCHERS

\*Not included in total taxa (on a separate list): some taxa with yellow flags, waifs, cultivated, hybrids, questionable and rejected (not in Jepson eflora) taxa



# CAS - California Academy of Sciences Vascular Plants (CAS:BOT-BC) [Fremontodendron californicum](#) –

**Catalog #:** 212964

**Occurrence ID:** urn:catalog:CAS:BOT-BC:212964

**Secondary Catalog #:** urn:catalog:CAS:DS:171

→ **Taxon:** *Fremontodendron californicum* (Torr.) Coville

**Family:** Malvaceae

→ **Collector:** Dudley, W. R.

**Number:** s.n.

**Date:** 1897-12-29

→ **Verbatim Date:** Dec. 29, 1897.

→ **Locality:** United States, California, San Mateo County, Butano Creek, Santa Cruz Peninsula

→ **Habitat:** On rocky sandstone slope.

**Usage Rights:** [CC BY-NC \(Attribution-Non-Commercial\)](#)

**Record ID:** 9c252575-09f3-443a-95b9-8ec8171e1529

- Details
- Map
- Comments**
- Linked Resources
- Traits



## UCJEPS - University and Jepson Herbaria, University of California, Berkeley (UCJEPS:VASC)

**Catalog #:** UC1140922

**Occurrence ID:** 49f1e3dd-b870-48f1-8162-528d7b7f6906

→ **Taxon:** *Fremontodendron californicum* subsp. *californicum*

**Family:** Malvaceae

→ **Collector:** W. R. Dudley

**Date:** 1897-12-29

→ **Verbatim Date:** Dec 29 1897

→ **Locality:** United States, California, San Mateo, Santa Cruz Peninsula, Butano Creek Butano Creek; Santa Cruz Peninsula, Butano Creek

37.2473 -122.3795 +-1000m. WGS84

→ **Habitat:** on rocky sandstone slopes

→ **Reproductive Condition:** Flowering/Fruiting

→ **Notes:** duplicate" not in database

**Usage Rights:** [CC BY-NC \(Attribution-Non-Commercial\)](#)

**Record ID:** 723564e4-d9ca-485b-a35d-94fb5017c503

For additional information about this specimen, please contact: Jason Alexander, Data Manager ([jason\\_alexander@berkeley.edu](mailto:jason_alexander@berkeley.edu))

[Tweet](#)

IA FLANNELBUSH – showing  
apped outside its natural range  
[s.berkeley.edu/consortium/about\\_yellow.html](https://s.berkeley.edu/consortium/about_yellow.html)



## Fremontodendron californicum

### CALIFORNIA FLANNELBUSH

LOCALLY RARE, UNCOMMON OR DECLINING SPECIES  
IN SAN MATEO COUNTY

### Database of Rare, Unusual and Significant Plants of Alameda and Contra Costa Counties

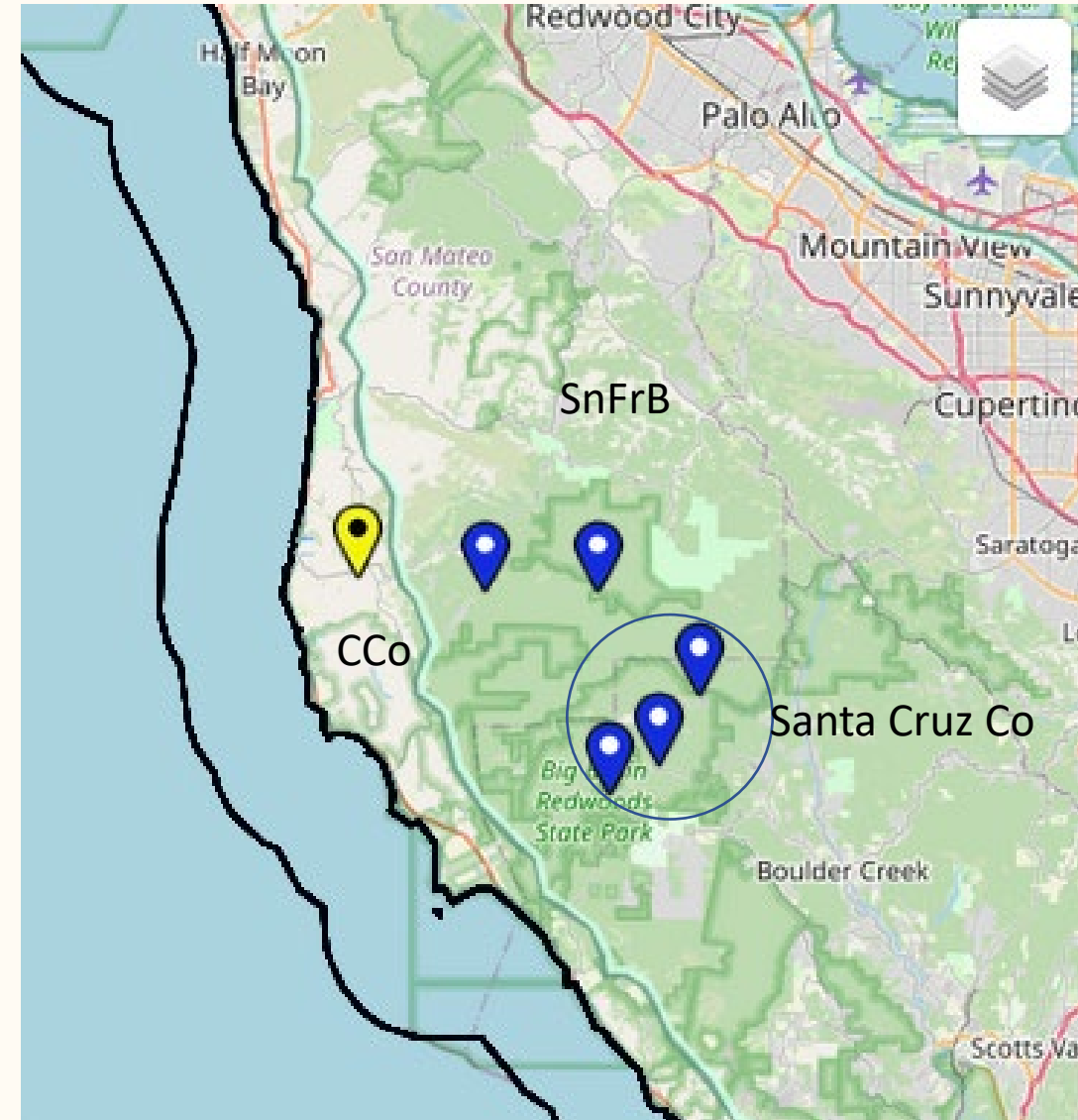
<https://ebcnps.org/ebrare-plant-database/>

THE 2 FLANNELBUSH POPULATIONS WE KNOW ABOUT IN SM CO ONLY OCCUR ON SMALL POCKETS OF ANCIENT MARINE DEPOSITS IN THE SANTA CRUZ MTS.

Criteria indicating it as locally rare:

- Number of populations - 2
- Small populations – based on notes from observations and collections
- Limited and Threatened Habitat – ancient marine deposits
- Small geographical range – known from only 1 region in SM Co
- Fire information notes - seedlings germinated after CZU fire but no re-sprouting stumps

I am still updating the list of “locally rare” taxa but we may have over 300 native plant taxa that fit into the locally rare category



OAKMEAD HERBARIUM (JROH)  
JASPER RIDGE BIOLOGICAL PRESERVE  
Stanford University (<https://jrpbp.stanford.edu/research/herbarium>)





# FUN TRIVIA for San Mateo County Flora



**Erysimum franciscanum**  
**SAN FRANCISCO WALLFLOWER**  
Collected 199 times this  
collection on SF watershed land  
in 1994 by Dean Taylor



Dylan Neubauer

**Astragalus agnicidus**  
**HUMBOLDT COUNTY MILKVETCH**  
Most recently discovered after the CZU  
fire collected by Dylan Neubauer in 2023

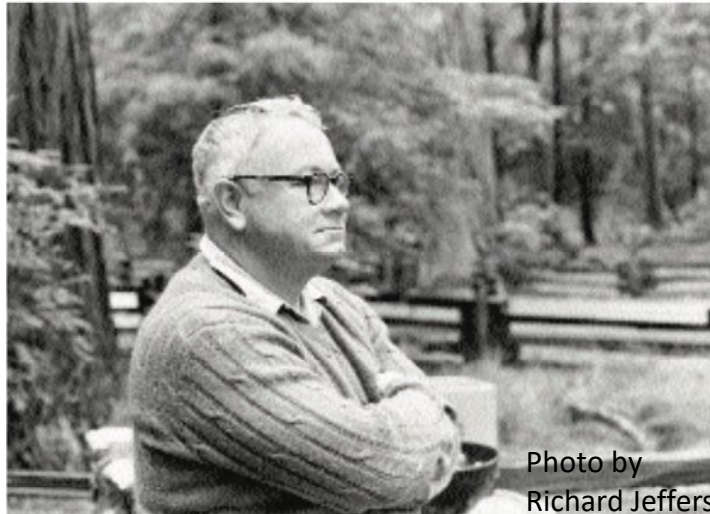


Photo by  
Richard Jeffers

Collected the most - 4,828 collections in SM Co



**Scoliopus bigelovii - SLINK POD**  
The oldest CZU collection for SM Co.  
Collected on 3/1/1867 by Volney Rattan  
at Searsville



Quote from John Hunter Thomas Flora of the Santa Cruz Mountains:  
“This flora will, I hope, acquaint at least a few more people with the plants around them, and perhaps thus serve as a stimulus, however slight, toward more permanent protection of our environment”

[Species Inventory](#)





