



Friends of Sausal Creek

COLLABORATIVE CONSERVATION: Community Action to Transform Sausal Creek

BERLIN, K., GIORDANO, L., MATSUDA, E., STENGER, E.

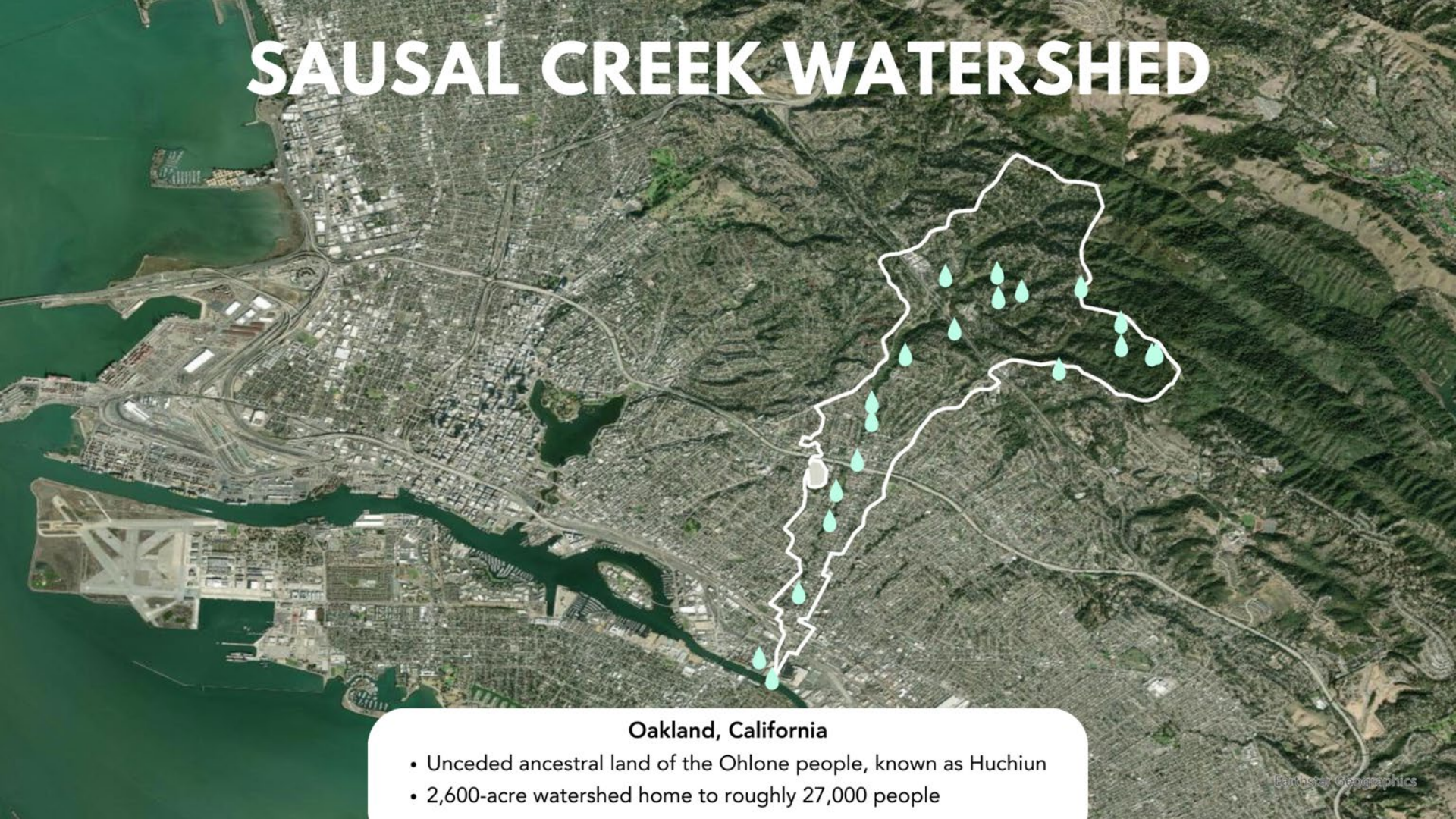


wra
Environmental
Consultants



CITY OF
Oakland

SAUSAL CREEK WATERSHED



Oakland, California

- Unceded ancestral land of the Ohlone people, known as Huchiu
- 2,600-acre watershed home to roughly 27,000 people

HEADWATERS



**LOWER
WATERSHED**



Fruitvale District

La Clinica de La Raza mural by artist Xochitl Nevel-Guerrero

GROUNDWORK

Excerpts from 2018 - 2020 Community Partners Needs Assessment

“We only really have two parks in Fruitvale [César Chávez and Josie de la Cruz]. Both of these parks are overused, and people don't often venture out of the neighborhood or to Oakland Hills to go to parks. More parks are needed in the flatlands. Where will the children play in the future if there are no parks?”

“There is a lack of access to green space and nature. Parks are seen as inaccessible and sometimes dangerous to many families in the area. Many families are too far removed from their natural environment, which results in behaviors such as littering, leading to a dirtier environment. Mentality toward public land needs to be seen as a right, not a luxury, and kids and their families need to take more advantage of accessing it.”

“Everything flows into the water...illegal dumping is an issue...Deep East Oakland hasn't had the same reinvestment as other parts of Oakland that have more wealth.”

FEASIBILITY STUDY FOR OPEN SPACE AND PARK EXPANSION IN THE LOWER SAUSAL CREEK WATERSHED



Funded by: California Department of Water Resources
Bay Area Integrated Regional Water Management
Disadvantaged Community and Tribal Involvement Program

PROJECT SITES



Barry Place



Wood Park

ECOLOGICAL + COMMUNITY CONCERNS



- Illegal dumping, littering, and creek contamination
- Invasive species overgrowth
- Accessibility and safety concerns
- Drainage Issues

PROJECT OVERVIEW

San Francisco Bay Water Quality Improvement Fund (SFBWQIF) — U.S. EPA & California Watershed Protection Fund — Rose Foundation



Improve air and water
quality and overall health
of the Sausal Creek
Watershed ecosystem



Build climate
resilience

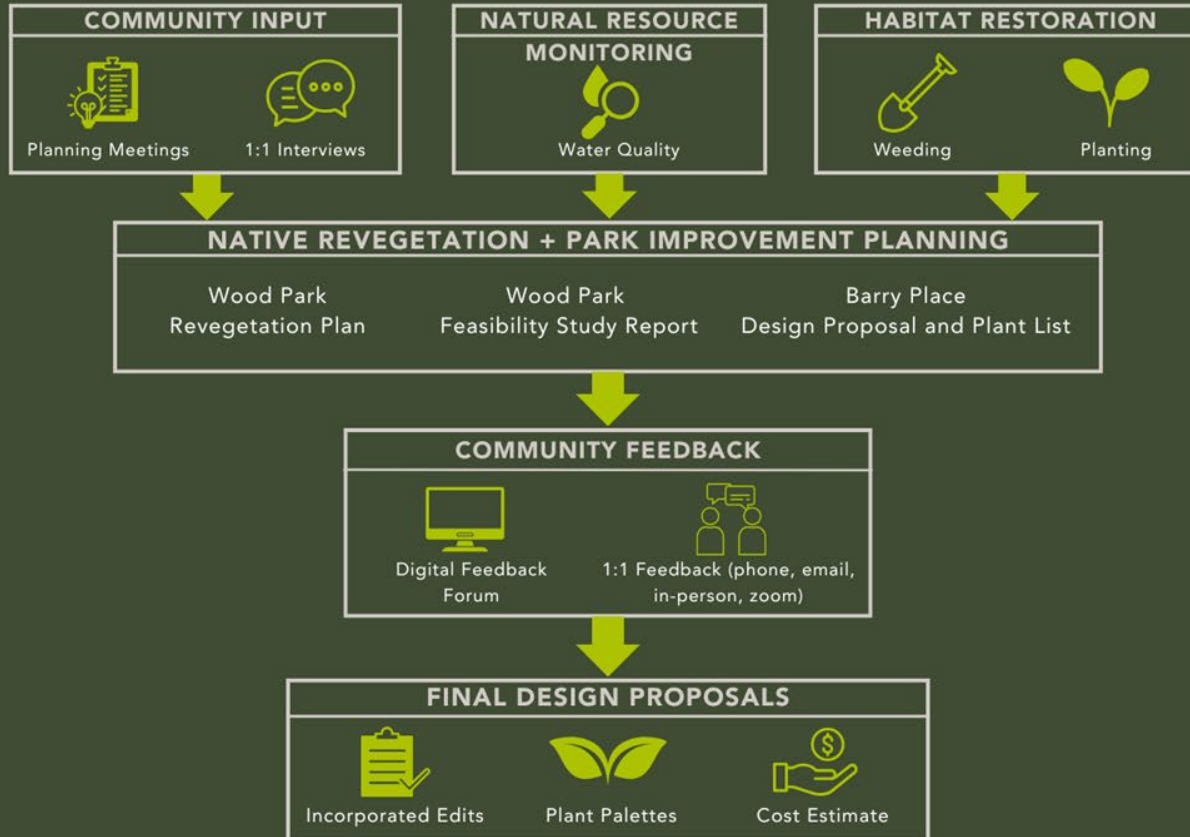


Develop a dedicated
community of creekside
environmental stewards



Increase access to safe,
quality, public urban
green space

COMMUNITY ENGAGEMENT FRAMEWORK



EXTENSIVE OUTREACH



BARRY PLACE PARKLET RESTORATION

Join Friends of Sausal Creek in reimagining a green space at Barry Place!

NEXT COMMUNITY MEETING:

3-16-24

Kid-friendly + light refreshments

RSVP with QR code or email info@sausalcreek.org to attend



Friends of Sausal Creek



March 2024 Watershed News

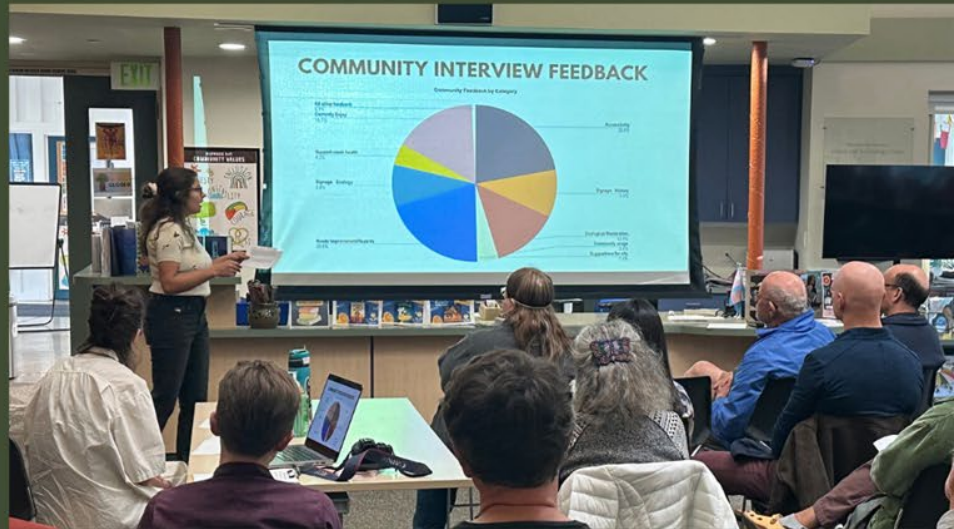
What's up at Wood Park?

Planning for Ecological Restoration, Climate Resilience, and Park Improvement



On March 12, the San Francisco Regional Office of the Environmental Protection Agency (EPA) announced its commitment to allocate \$43.5 million towards projects in 2024 that protect and restore the San Francisco Bay and local watersheds and

COMMUNITY MEETINGS AND 1:1 INTERVIEWS





VISIONING WORKSHOP



RESTORATION WORKDAYS



WATER QUALITY MONITORING



DIGITAL FEEDBACK FORUM



Figure 2 Current Wood Park Vegetation Communities and Photo Locations



Guest 1 Guest
Dec 09

As a McKillop Road resident, I'm so excited about this revegetation plan for many reasons! After dealing with the 2006 McKillop Road slide I'm really happy to see a focus on erosion control and health of the hillside. You've got the trifecta of fire safety, replanting with natives to aid in regeneration of pollinators and wildlife, and erosion control! We are so blessed to have FOSC and thankful you are looking at the health of Wood Park! ~ Kimberly



Christopher
Dec 09

This is amazing! We've lived near Wood Park for twenty-one years and can say as part of the neighborhood that we have all been looking forward to this for years.



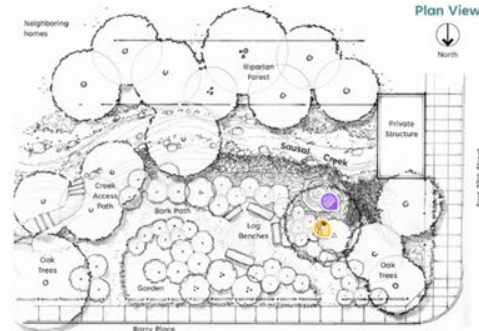
Reply



susannah
Dec 09

We live on School Street and are SO thrilled for this attention and love being given to beautiful Wood Park. It's a lovely spot, but feels pretty neglected. We can't wait to watch and be part of the transformation of the park!

↓ 16 more comments



× Comments 6



Erica Guest
Nov 12

I liked the idea to put trees here. I liked the idea to have a bay laurel tree, if there's enough space. Otherwise oaks or whatever's ecologically appropriate. If not here, I was going to suggest putting a tree or two in the garden area, but I don't know if we need one there if we have multiple here.

Reply



Vicki
Nov 13

looks wonderful. I'm so sorry the city financing didn't come through. I appreciate the determination to continue finding support. Thank you everyone, Vicki

Reply

Page 5



Erica Guest
Nov 12

These are nice plants. If not done already, I suggest selecting only plants that would naturally be in this specific spot. For example, I was told manzanitas (which are CA/Bay natives) naturally grow on ridgetops, so I'm glad they're not on this list. Restoring the plant community of this specific riparian/flats location will help us orient and ground ourselves, and maybe help wildlife.

Reply



Wood Park Revegetation Plan
+ Feasibility Study Report



Barry Place Design Proposal
+ Plant List

KEY OUTCOMES

2

final design proposals
+ revegetation plans

10
public
meetings

16
restoration
workdays

27
interviews with
neighbors

24
water quality
monitoring
sessions

120
meeting
attendees

140
cubic yards of
invasive vegetation
removed

500
native seedlings
planted

270
workday
volunteers

WHAT DID WE LEARN



Trust +
Relationship
Strengthening



Meeting + Feedback
Preferences

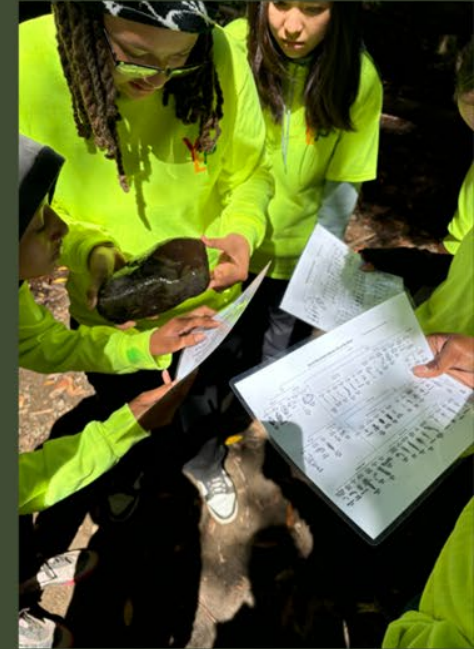


Navigating Local
Government



Ripple Effects

CONVERGING COLLABORATION



Civ Corps



Youth Employment Partnership

WHAT'S NEXT

NATURAL PLAY ELEMENTS USING REMOVED TREES FROM THE VEGETATION EFFORTS LOCATED THROUGHOUT THE AREA

RECONSTRUCT EXISTING CONCRETE DITCH AS NATURALIZED SEASONAL SWALE

INTERPRETIVE SIGNAGE, TYP.

PERMEABLE GARDEN PATH WAY

EXISTING LAWN

EXISTING PATHS TO REMAIN

OAK WOODLAND

WET MEADOW



IMPLEMENTATION



Secure Commitment from
City of Oakland



Apply for Implementation
Funding



Support Ongoing
Community Collaboration

TAKING ROOT



Winter Solstice Planting

- 500 native seedlings from our nursery planted at the project sites



Friends of Sausal Creek

THANK YOU!

Get in touch:

WWW.SAUSALCREEK.ORG

info@sausalcreek.org



ESA



wra

Environmental
Consultants



CITY OF
Oakland