

NEWLY DESCRIBED
ATRIPLEX GYPSOPHILA
(CHENOPODIACEAE)
AND A SUMMARY OF
THE ANNUAL *ATRIPLEX*
SPECIES OF
CALIFORNIA'S GREAT
VALLEY



Robert E. Preston brodiaeaguy@gmail.com

Taxonomy of *Atriplex* subsection *Pusillae*

TJM1 [TJM2]	Welsh (FNA)	Chu & Sanderson (2017)
<i>Atriplex pusilla</i>	<i>Atriplex pusilla</i>	<i>Obione pusilla</i>
<i>Atriplex parishii</i>	<i>Atriplex parishii</i> var. <i>parishii</i>	<i>Obione parishii</i>
<i>Atriplex depressa</i>	<i>Atriplex parishii</i> var. <i>depressa</i>	<i>Obione depressa</i>
<i>Atriplex minuscula</i>	<i>Atriplex parishii</i> var. <i>minuscula</i>	<i>Obione minuscula</i>
[<i>Atriplex subtilis</i>]	<i>Atriplex parishii</i> var. <i>subtilis</i>	<i>Obione subtilis</i>
[<i>Atriplex persistens</i>]	<i>Atriplex parishii</i> var. <i>persistens</i>	<i>Obione persistens</i>
<i>Atriplex cordulata</i> var. <i>cordulata</i>	<i>Atriplex cordulata</i> var. <i>cordulata</i>	<i>Obione cordulata</i>
[<i>Atriplex cordulata</i> var. <i>erecticaulis</i>]	<i>Atriplex cordulata</i> var. <i>erecticaulis</i>	<i>Obione erecticaulis</i>
<i>Atriplex tularensis</i>	<i>Atriplex tularensis</i>	<i>Obione tularensis</i>
<i>Atriplex coronata</i> var. <i>coronata</i>	<i>Atriplex coronata</i> var. <i>coronata</i>	<i>Obione coronata</i>
<i>Atriplex coronata</i> var. <i>vallicola</i>	<i>Atriplex coronata</i> var. <i>vallicola</i>	<i>Obione vallicola</i>

A. minuscula



A. subtilis



A. persistens



A. cordulata



A. coronata



A. erecticaulis







Wood Ranch

La Jolla Ranch

Sierra Valley Huling

Chaney Ranch

Pilibos Ranch

Muretta Farm

Arbois

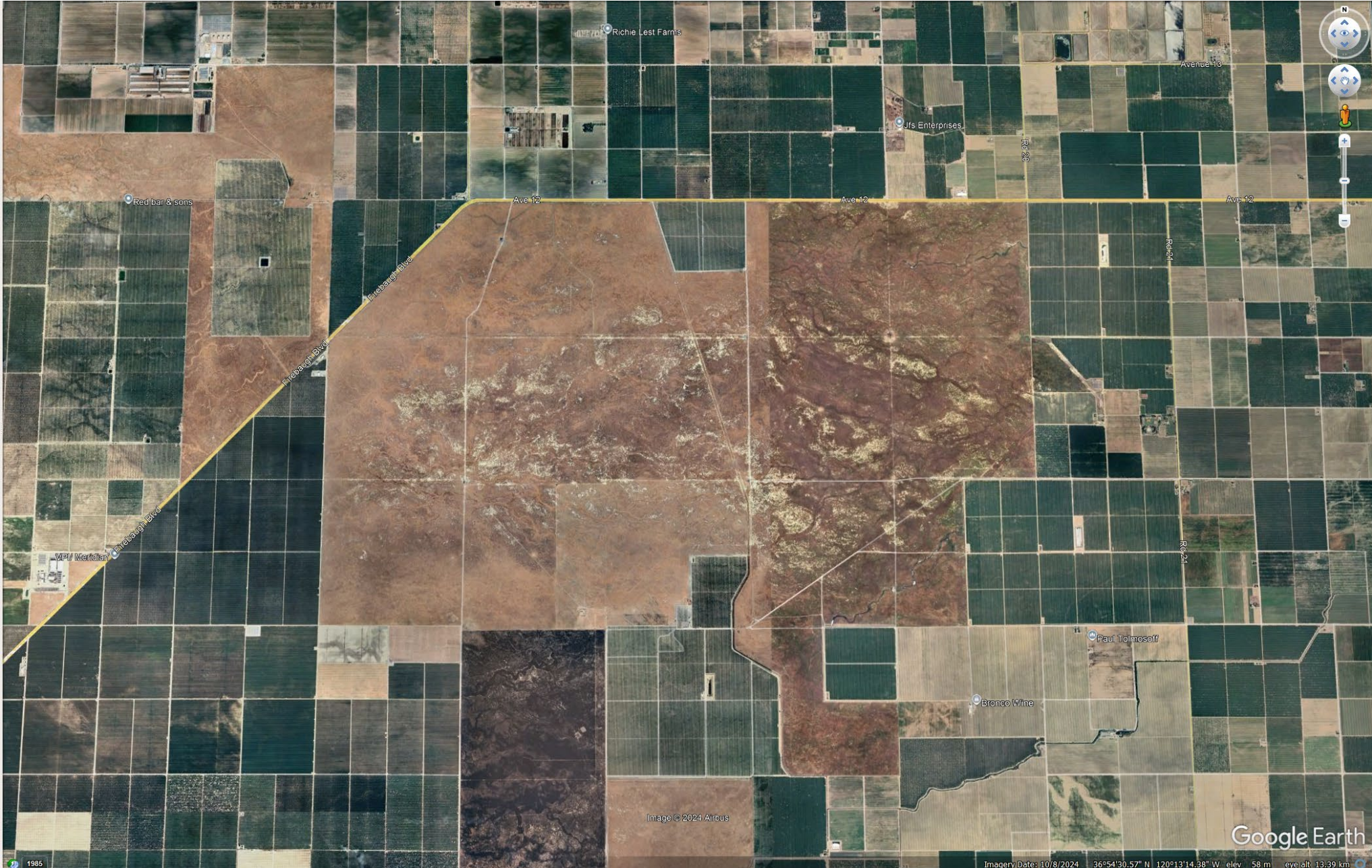
Rojas Pierce Park
Mendota

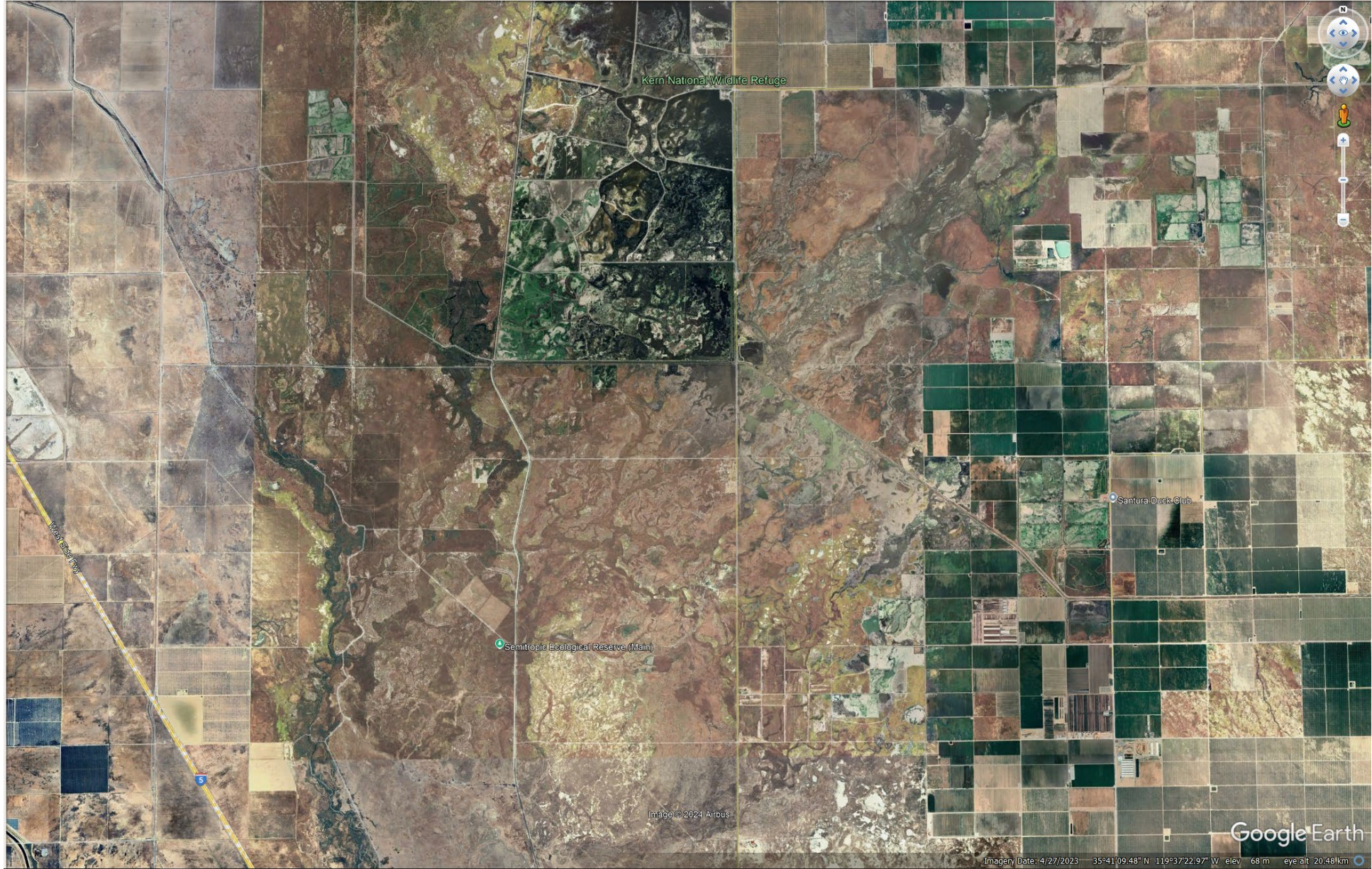
PG Mendota

Image © 2024 Airbus

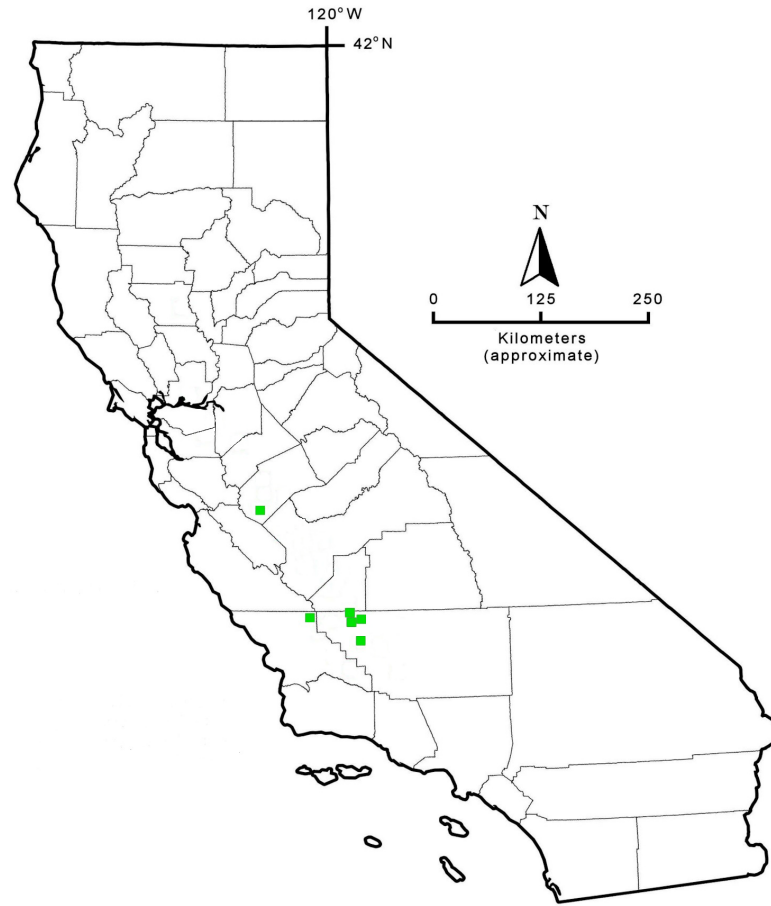
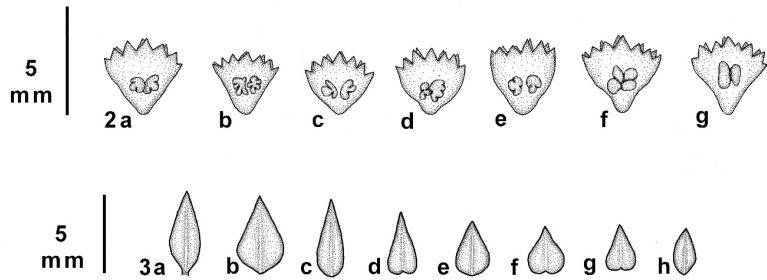
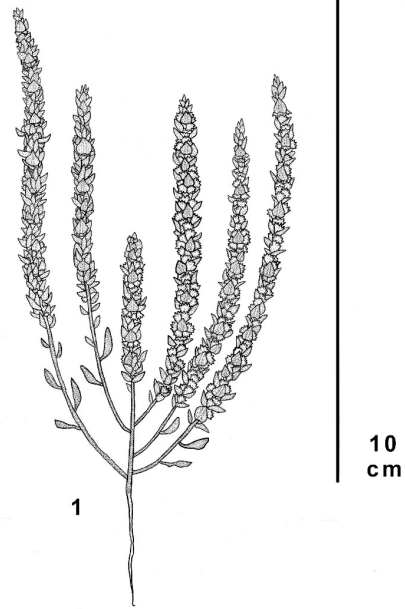
Google Earth

Imagery Date: 8/30/2023 36°43'26.40" N 120°32'00.12" W elev: 84 m eye alt: 24.96 km





Atriplex vallicola



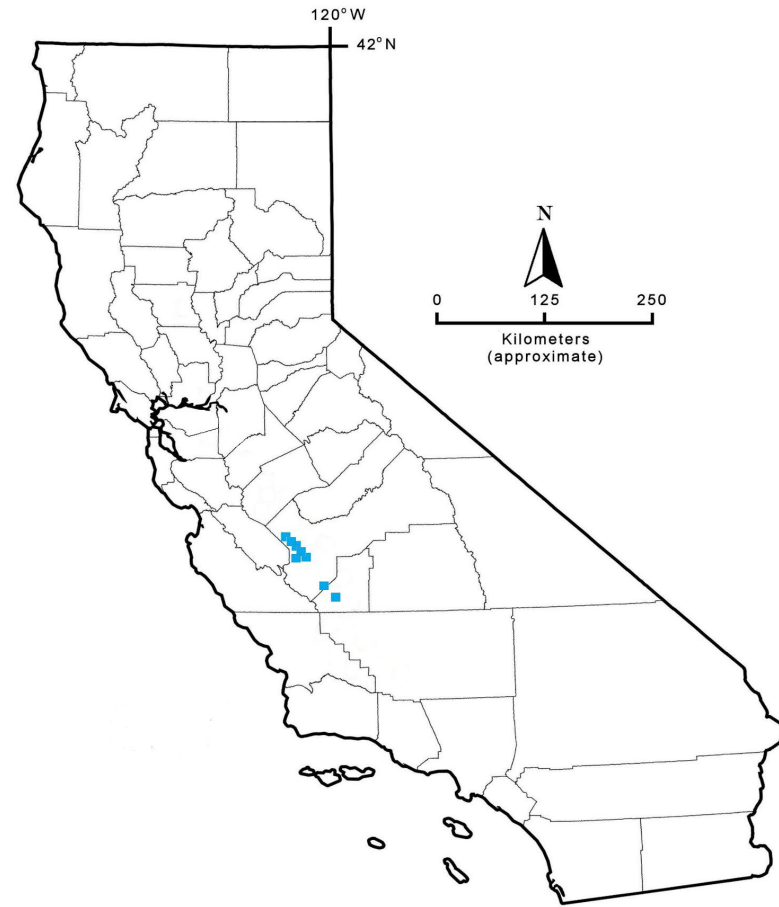


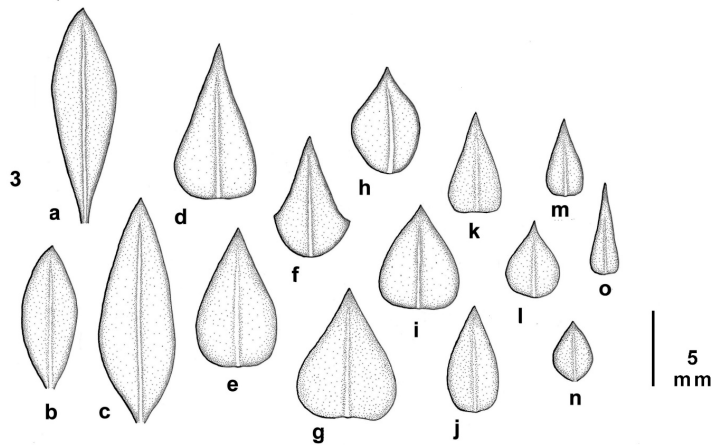
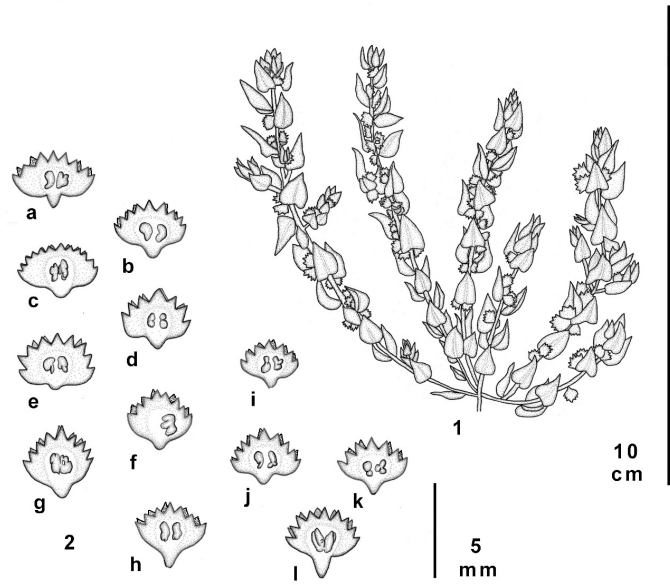
Atriplex vallicola

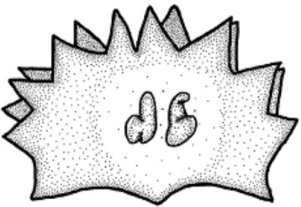
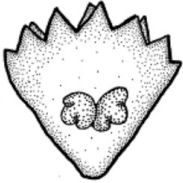
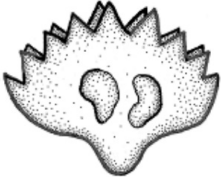
Atriplex coronata



Atriplex gypsophila





Species	Bracteole Shape	Bracteole Length (mm)	Bracteole Width (mm)	Plant Height (cm)	Leaf Length (mm)	Leaf Width (mm)
<i>Atriplex coronata</i>		4–5	4–6.5	5–60	5–40	2–10
<i>Atriplex vallicola</i>		2–3.5	2–3.5	2–20	proximal <7, distal 2–4	proximal 2–2.5, distal 1–1.5
<i>Atriplex gypsophila</i>		2–3.5	3–5	3–14	proximal 5–22, distal 2–10	proximal 3–7, distal 2–7







Carl W. Sharnith Herbarium
San José State University
8,803396



HERBARIUM OF SAN JOSE STATE COLLEGE
Plants of California (Chenopodiaceae)

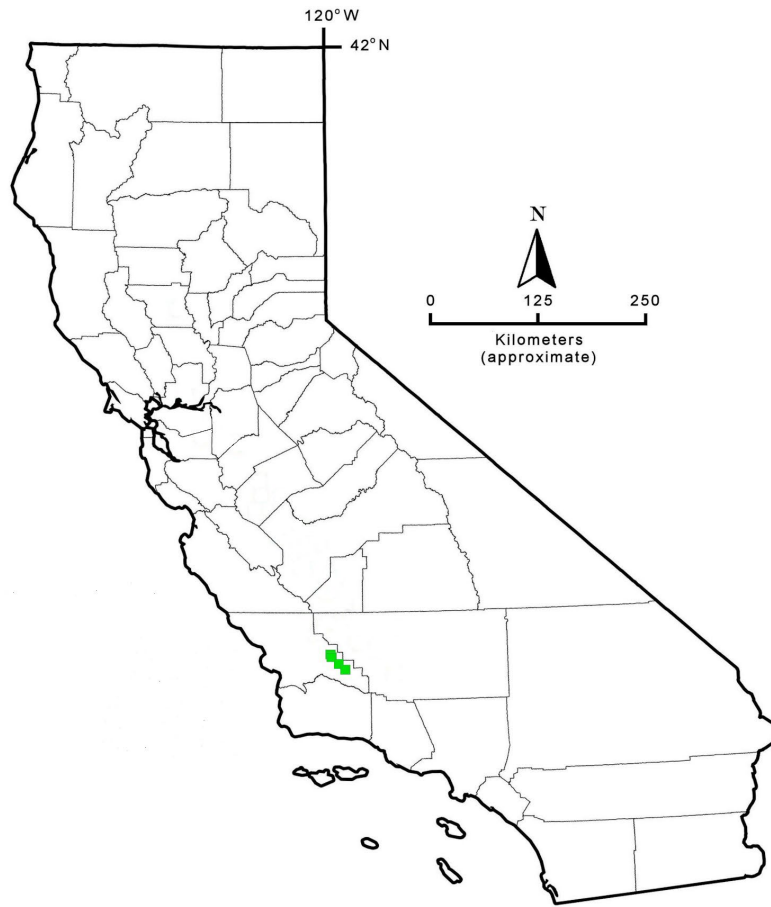
Atriplex coronata S. Wats.

desiccating alkaline mud, south shore
of Soda Lake, alt. ca. 1954 ft., Car-
rizo Plain, about 10 miles southeast
of Simular, eastern
San Luis Obispo County.

C. W. Sharnith 6810.

20 April 1962.

Atriplex flavida





Takeaways...

- Unfamiliarity with the small annual superficially similar sympatric species has led to a tendency to lump taxa
- More careful study has recognized 5 new *Atriplex* species since TJM1
- Confusion over *Atriplex vallicola* has obscured two taxa (*Atriplex flavida*, *Atriplex gypsophila*), probably more